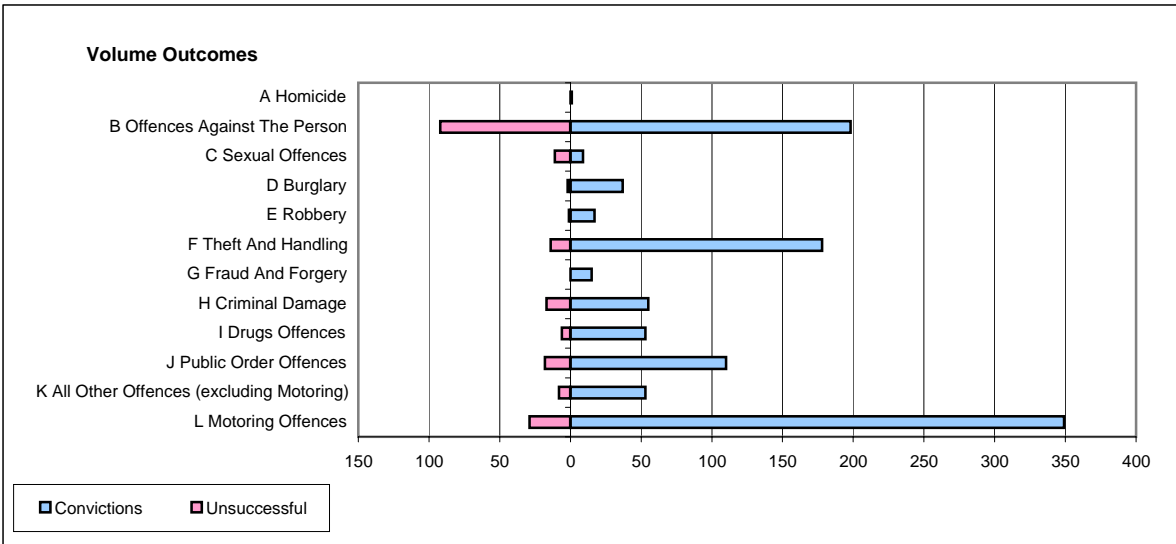
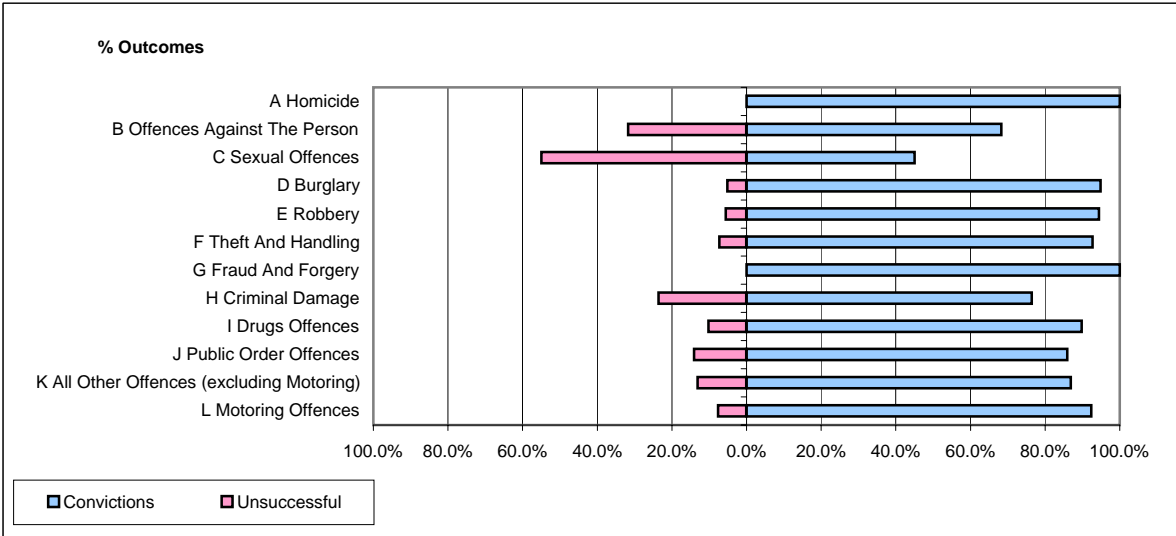


CPS OUTCOMES BY PRINCIPAL OFFENCE CATEGORY

February 2006

P08-Derbyshire



	Convictions		Unsuccessful	
	Number of Defendants	%	Number of Defendants	%
A Homicide	1	100.0%	0	0.0%
B Offences Against The Person	198	68.3%	92	31.7%
C Sexual Offences	9	45.0%	11	55.0%
D Burglary	37	94.9%	2	5.1%
E Robbery	17	94.4%	1	5.6%
F Theft And Handling	178	92.7%	14	7.3%
G Fraud And Forgery	15	100.0%	0	0.0%
H Criminal Damage	55	76.4%	17	23.6%
I Drugs Offences	53	89.8%	6	10.2%
J Public Order Offences	110	85.9%	18	14.1%
K All Other Offences (excluding Motoring)	53	86.9%	8	13.1%
L Motoring Offences	349	92.3%	29	7.7%
Admin Finalisations	0	0.0%	34	100.0%
TOTAL	1,075	82.2%	232	17.8%