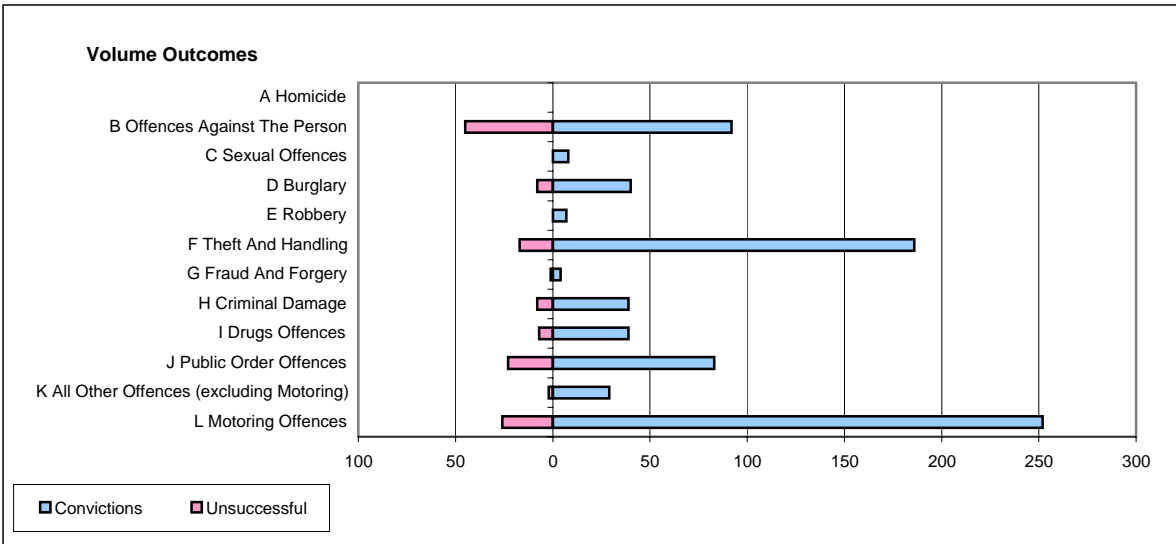
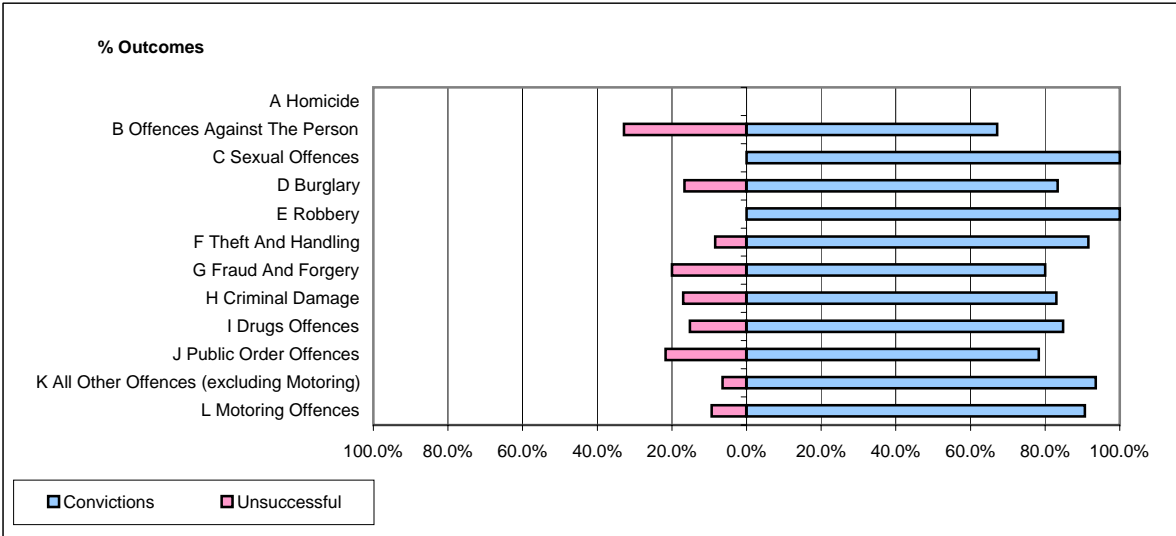


**CPS OUTCOMES BY PRINCIPAL OFFENCE CATEGORY**

**February 2006**

**P06-Cleveland**



	Convictions		Unsuccessful	
	Number of Defendants	%	Number of Defendants	%
<b>A Homicide</b>	<b>0</b>	<b>#DIV/0!</b>	<b>0</b>	<b>#DIV/0!</b>
<b>B Offences Against The Person</b>	<b>92</b>	<b>67.2%</b>	<b>45</b>	<b>32.8%</b>
<b>C Sexual Offences</b>	<b>8</b>	<b>100.0%</b>	<b>0</b>	<b>0.0%</b>
<b>D Burglary</b>	<b>40</b>	<b>83.3%</b>	<b>8</b>	<b>16.7%</b>
<b>E Robbery</b>	<b>7</b>	<b>100.0%</b>	<b>0</b>	<b>0.0%</b>
<b>F Theft And Handling</b>	<b>186</b>	<b>91.6%</b>	<b>17</b>	<b>8.4%</b>
<b>G Fraud And Forgery</b>	<b>4</b>	<b>80.0%</b>	<b>1</b>	<b>20.0%</b>
<b>H Criminal Damage</b>	<b>39</b>	<b>83.0%</b>	<b>8</b>	<b>17.0%</b>
<b>I Drugs Offences</b>	<b>39</b>	<b>84.8%</b>	<b>7</b>	<b>15.2%</b>
<b>J Public Order Offences</b>	<b>83</b>	<b>78.3%</b>	<b>23</b>	<b>21.7%</b>
<b>K All Other Offences (excluding Motoring)</b>	<b>29</b>	<b>93.5%</b>	<b>2</b>	<b>6.5%</b>
<b>L Motoring Offences</b>	<b>252</b>	<b>90.6%</b>	<b>26</b>	<b>9.4%</b>
<b>Admin Finalisations</b>	<b>0</b>	<b>0.0%</b>	<b>10</b>	<b>100.0%</b>
<b>TOTAL</b>	<b>779</b>	<b>84.1%</b>	<b>147</b>	<b>15.9%</b>