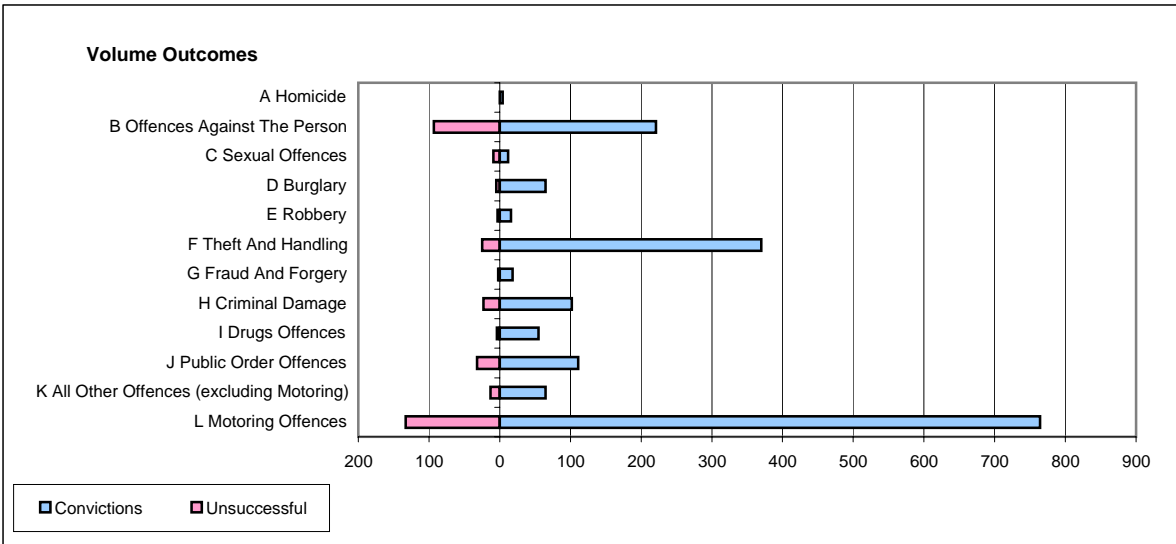
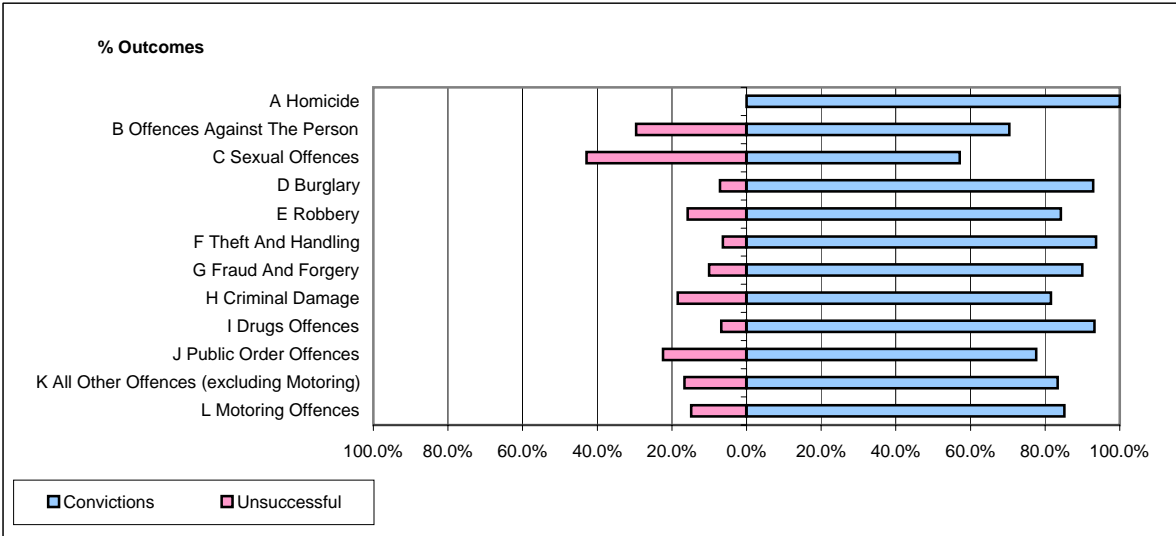


CPS OUTCOMES BY PRINCIPAL OFFENCE CATEGORY

February 2006

P01-Avon&Somerset



	Convictions		Unsuccessful	
	Number of Defendants	%	Number of Defendants	%
A Homicide	4	100.0%	0	0.0%
B Offences Against The Person	221	70.4%	93	29.6%
C Sexual Offences	12	57.1%	9	42.9%
D Burglary	65	92.9%	5	7.1%
E Robbery	16	84.2%	3	15.8%
F Theft And Handling	370	93.7%	25	6.3%
G Fraud And Forgery	18	90.0%	2	10.0%
H Criminal Damage	102	81.6%	23	18.4%
I Drugs Offences	55	93.2%	4	6.8%
J Public Order Offences	111	77.6%	32	22.4%
K All Other Offences (excluding Motoring)	65	83.3%	13	16.7%
L Motoring Offences	764	85.2%	133	14.8%
Admin Finalisations	0	0.0%	65	100.0%
TOTAL	1,803	81.6%	407	18.4%