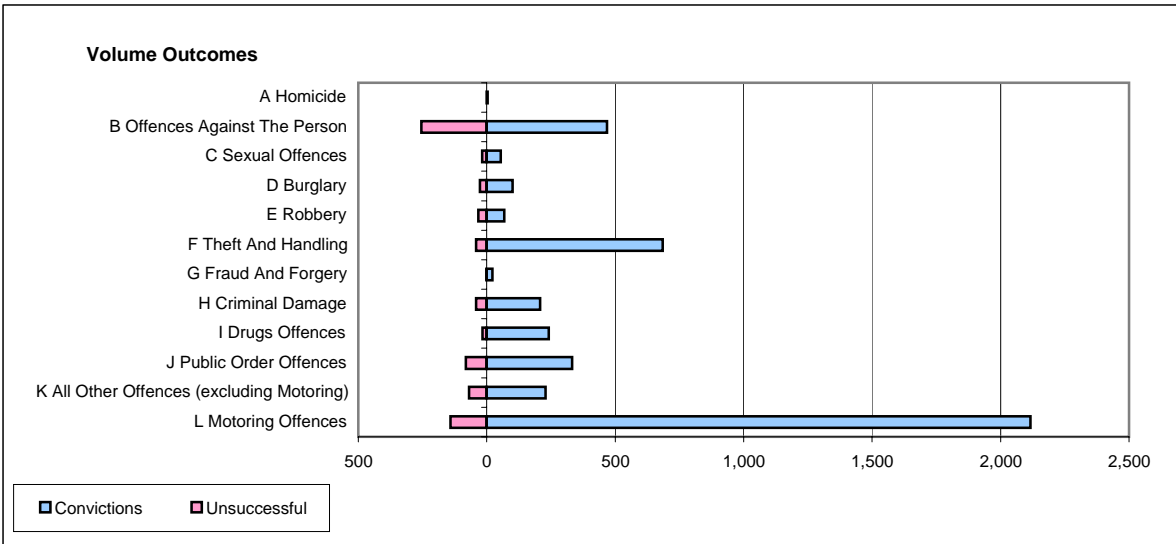
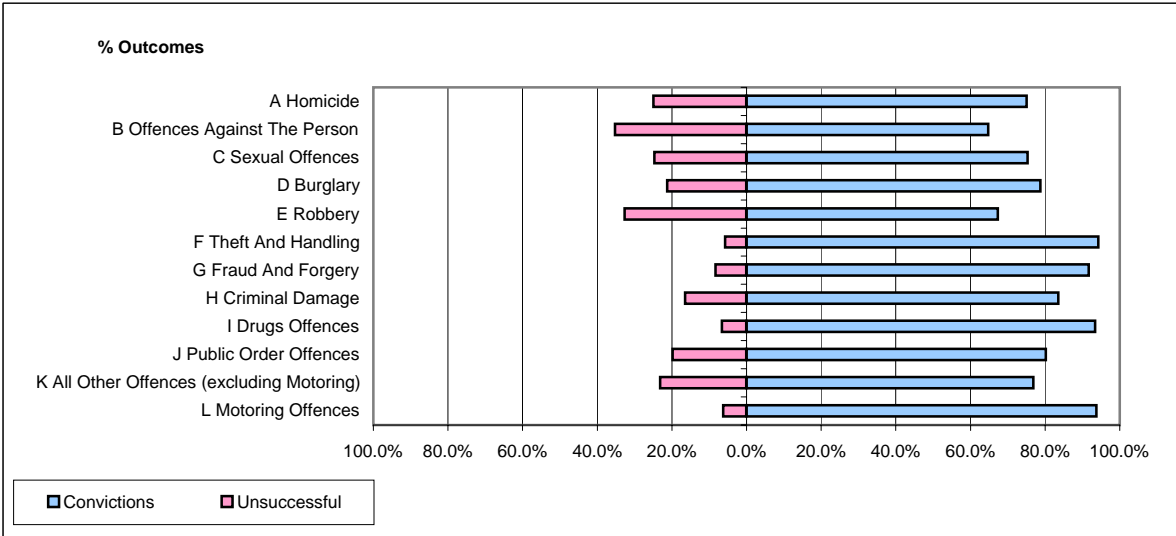


CPS OUTCOMES BY PRINCIPAL OFFENCE CATEGORY

January 2006

P41-WestMidlands



	Convictions		Unsuccessful	
	Number of Defendants	%	Number of Defendants	%
A Homicide	3	75.0%	1	25.0%
B Offences Against The Person	468	64.7%	255	35.3%
C Sexual Offences	55	75.3%	18	24.7%
D Burglary	100	78.7%	27	21.3%
E Robbery	68	67.3%	33	32.7%
F Theft And Handling	685	94.2%	42	5.8%
G Fraud And Forgery	22	91.7%	2	8.3%
H Criminal Damage	208	83.5%	41	16.5%
I Drugs Offences	241	93.4%	17	6.6%
J Public Order Offences	332	80.2%	82	19.8%
K All Other Offences (excluding Motoring)	229	76.8%	69	23.2%
L Motoring Offences	2,116	93.8%	141	6.2%
Admin Finalisations	0	0.0%	138	100.0%
TOTAL	4,527	83.9%	866	16.1%