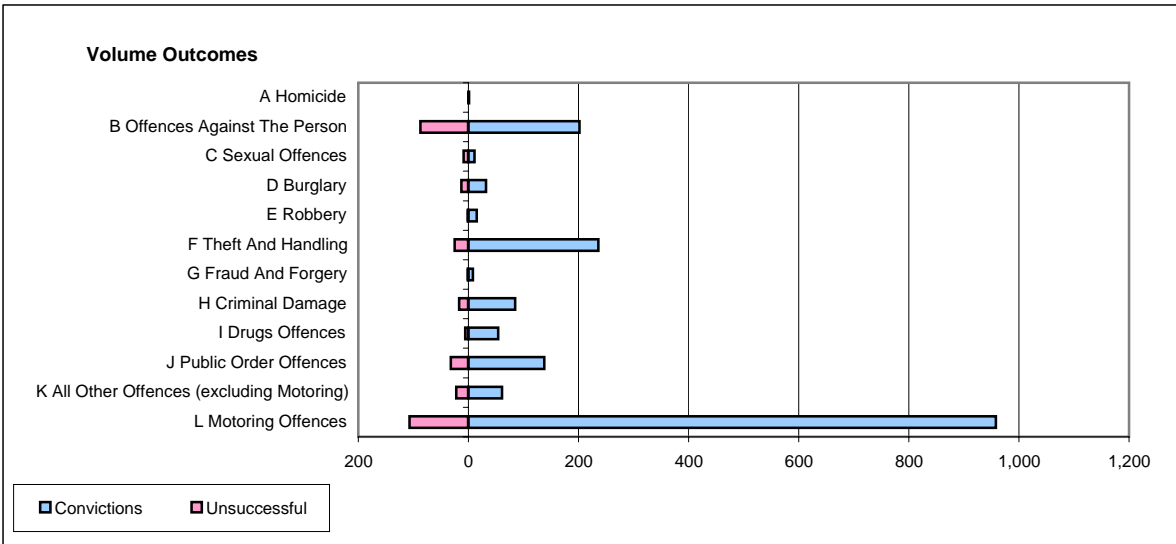
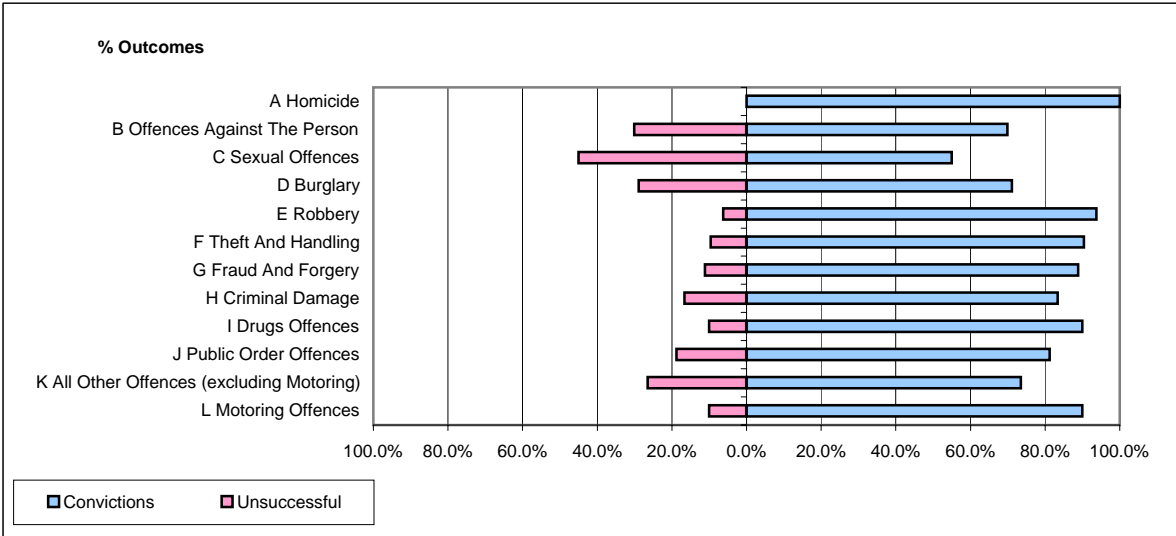


CPS OUTCOMES BY PRINCIPAL OFFENCE CATEGORY

January 2006

P40-WestMercia



	Convictions		Unsuccessful	
	Number of Defendants	%	Number of Defendants	%
A Homicide	1	100.0%	0	0.0%
B Offences Against The Person	202	69.9%	87	30.1%
C Sexual Offences	11	55.0%	9	45.0%
D Burglary	32	71.1%	13	28.9%
E Robbery	15	93.8%	1	6.3%
F Theft And Handling	236	90.4%	25	9.6%
G Fraud And Forgery	8	88.9%	1	11.1%
H Criminal Damage	85	83.3%	17	16.7%
I Drugs Offences	54	90.0%	6	10.0%
J Public Order Offences	138	81.2%	32	18.8%
K All Other Offences (excluding Motoring)	61	73.5%	22	26.5%
L Motoring Offences	958	90.0%	107	10.0%
Admin Finalisations	0	0.0%	27	100.0%
TOTAL	1,801	83.8%	347	16.2%