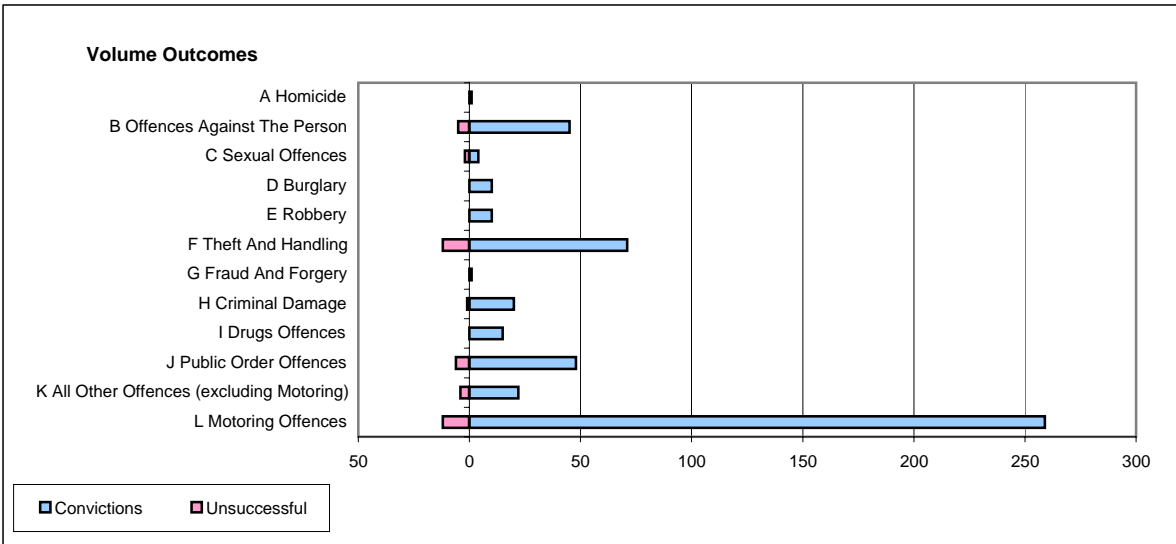
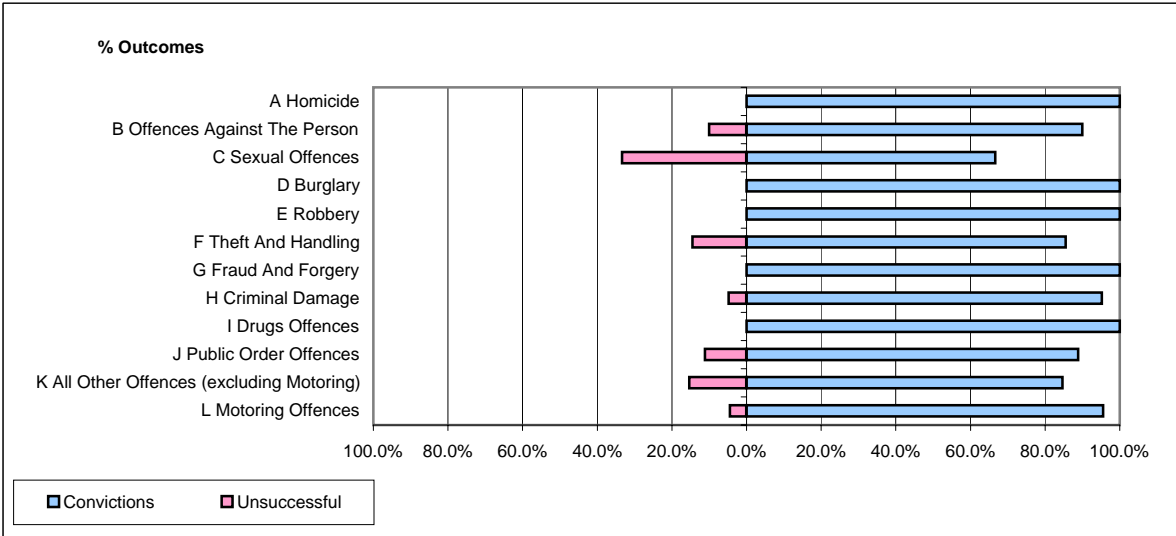


**CPS OUTCOMES BY PRINCIPAL OFFENCE CATEGORY**

January 2006

**P39-Warwickshire**



	Convictions		Unsuccessful	
	Number of Defendants	%	Number of Defendants	%
<b>A Homicide</b>	1	100.0%	0	0.0%
<b>B Offences Against The Person</b>	45	90.0%	5	10.0%
<b>C Sexual Offences</b>	4	66.7%	2	33.3%
<b>D Burglary</b>	10	100.0%	0	0.0%
<b>E Robbery</b>	10	100.0%	0	0.0%
<b>F Theft And Handling</b>	71	85.5%	12	14.5%
<b>G Fraud And Forgery</b>	1	100.0%	0	0.0%
<b>H Criminal Damage</b>	20	95.2%	1	4.8%
<b>I Drugs Offences</b>	15	100.0%	0	0.0%
<b>J Public Order Offences</b>	48	88.9%	6	11.1%
<b>K All Other Offences (excluding Motoring)</b>	22	84.6%	4	15.4%
<b>L Motoring Offences</b>	259	95.6%	12	4.4%
<b>Admin Finalisations</b>	0	0.0%	3	100.0%
<b>TOTAL</b>	<b>506</b>	<b>91.8%</b>	<b>45</b>	<b>8.2%</b>