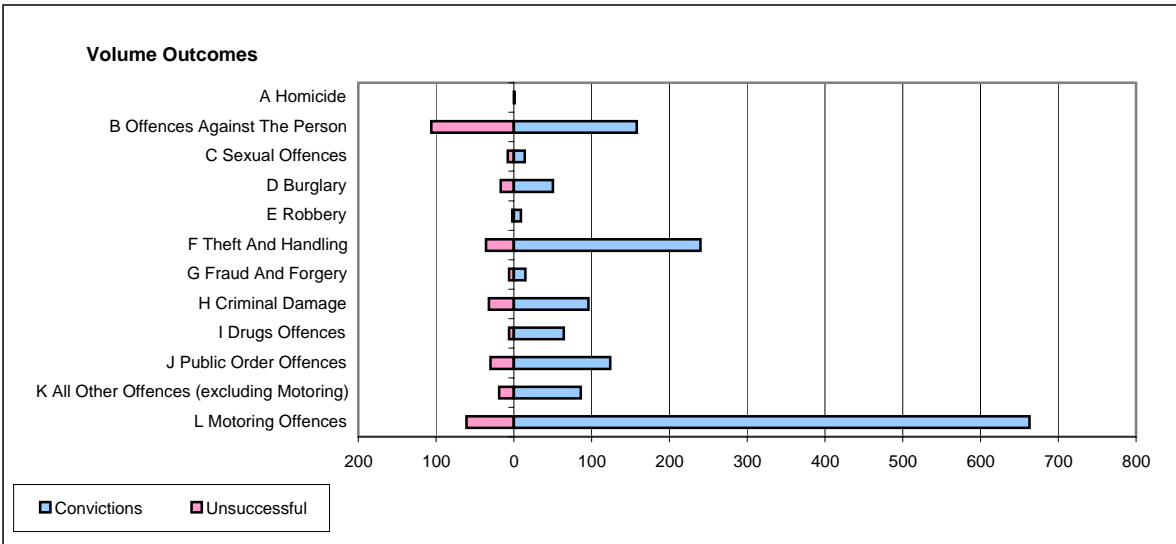
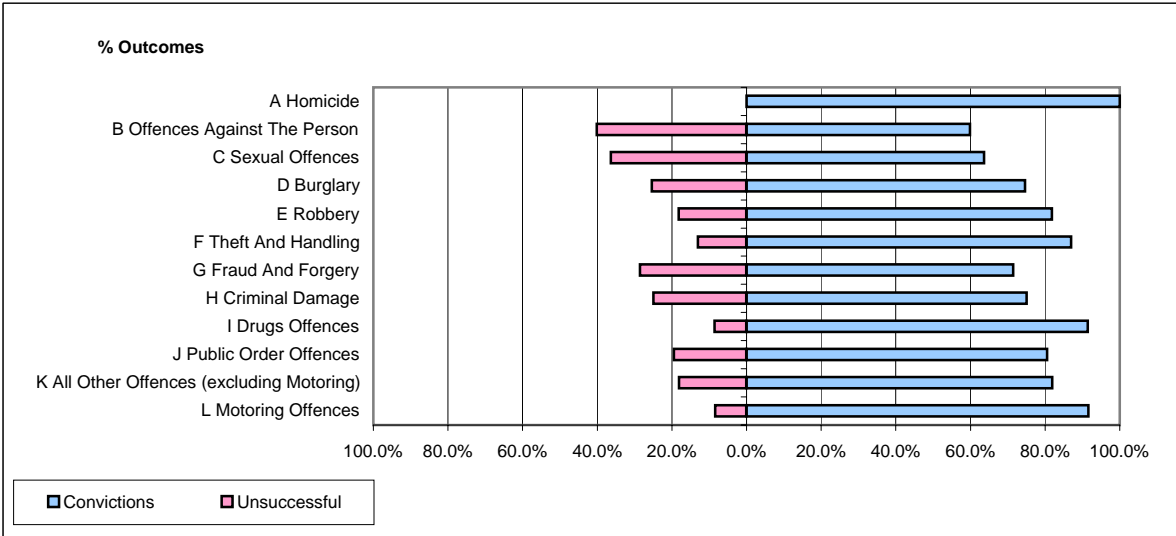


CPS OUTCOMES BY PRINCIPAL OFFENCE CATEGORY

January 2006

P37-Sussex



	Convictions		Unsuccessful	
	Number of Defendants	%	Number of Defendants	%
A Homicide	1	100.0%	0	0.0%
B Offences Against The Person	158	59.8%	106	40.2%
C Sexual Offences	14	63.6%	8	36.4%
D Burglary	50	74.6%	17	25.4%
E Robbery	9	81.8%	2	18.2%
F Theft And Handling	240	87.0%	36	13.0%
G Fraud And Forgery	15	71.4%	6	28.6%
H Criminal Damage	96	75.0%	32	25.0%
I Drugs Offences	64	91.4%	6	8.6%
J Public Order Offences	124	80.5%	30	19.5%
K All Other Offences (excluding Motoring)	86	81.9%	19	18.1%
L Motoring Offences	663	91.6%	61	8.4%
Admin Finalisations	0	0.0%	32	100.0%
TOTAL	1,520	81.1%	355	18.9%