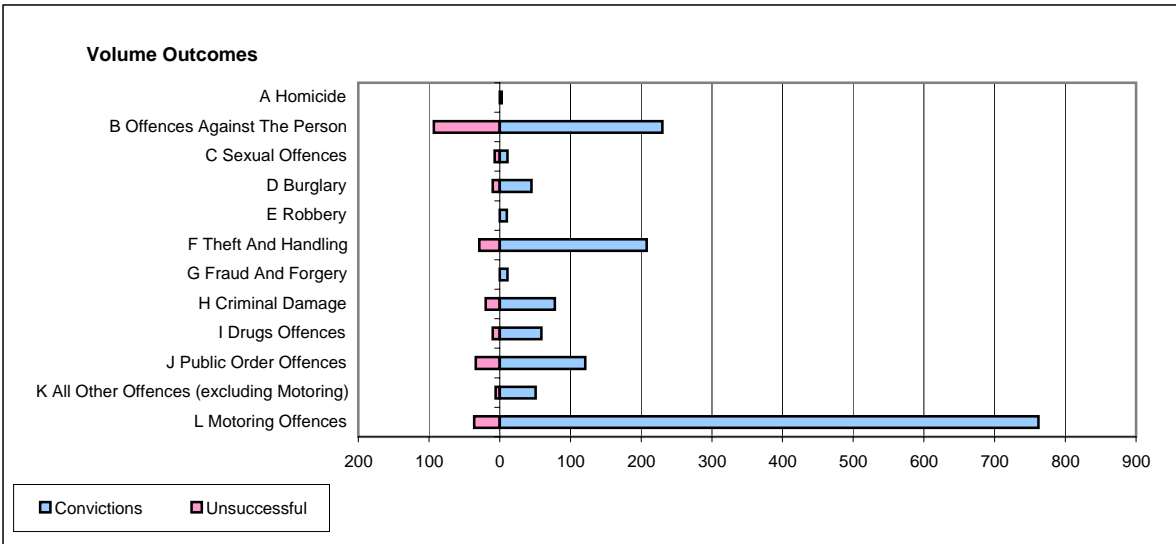
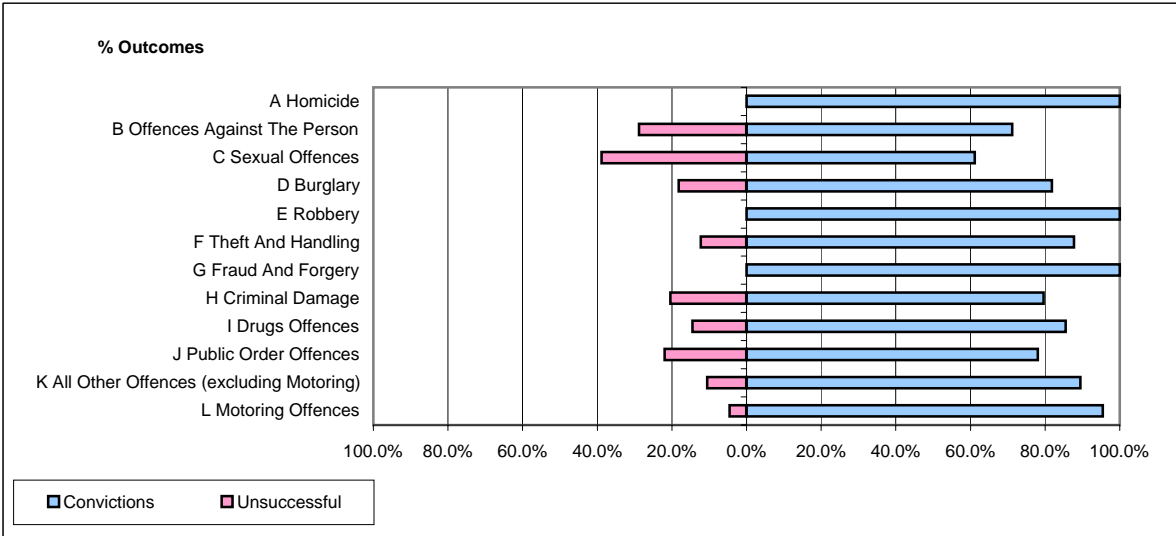


CPS OUTCOMES BY PRINCIPAL OFFENCE CATEGORY

January 2006

P34-Staffordshire



	Convictions		Unsuccessful	
	Number of Defendants	%	Number of Defendants	%
A Homicide	3	100.0%	0	0.0%
B Offences Against The Person	230	71.2%	93	28.8%
C Sexual Offences	11	61.1%	7	38.9%
D Burglary	45	81.8%	10	18.2%
E Robbery	10	100.0%	0	0.0%
F Theft And Handling	208	87.8%	29	12.2%
G Fraud And Forgery	11	100.0%	0	0.0%
H Criminal Damage	78	79.6%	20	20.4%
I Drugs Offences	59	85.5%	10	14.5%
J Public Order Offences	121	78.1%	34	21.9%
K All Other Offences (excluding Motoring)	51	89.5%	6	10.5%
L Motoring Offences	762	95.5%	36	4.5%
Admin Finalisations	0	0.0%	36	100.0%
TOTAL	1,589	85.0%	281	15.0%