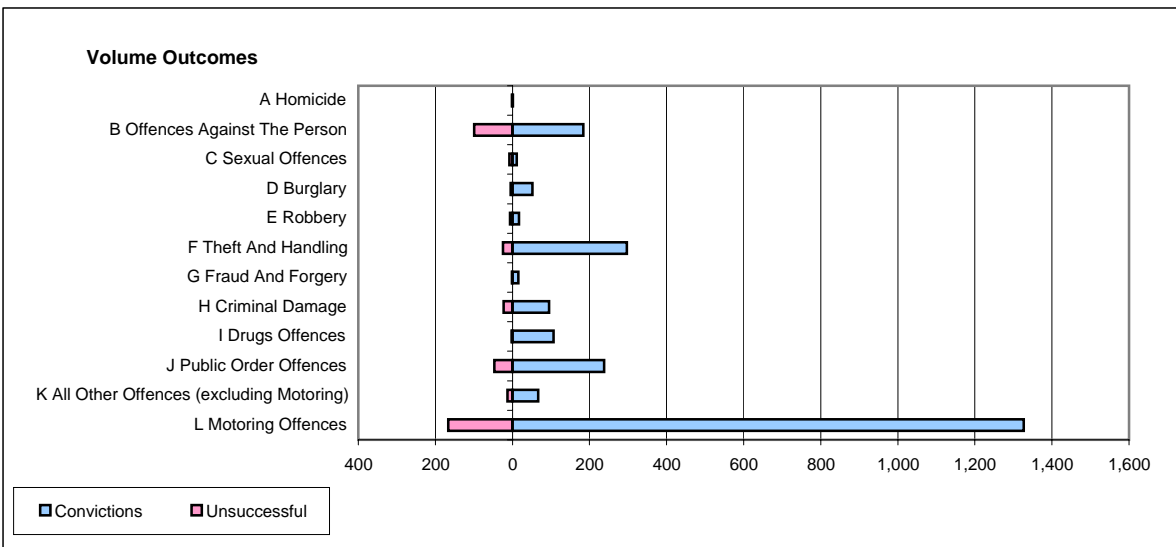
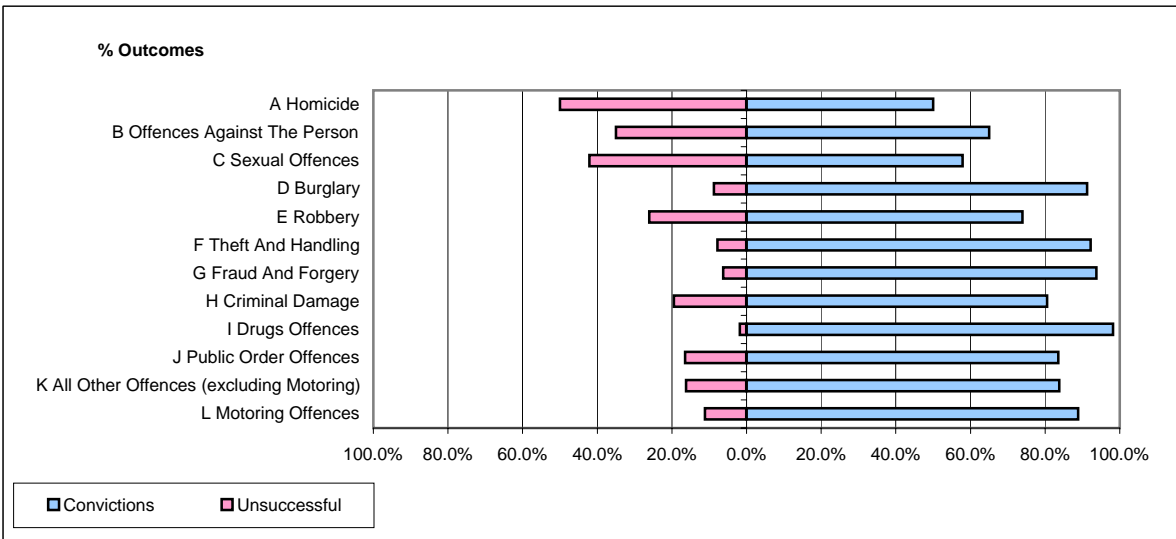


CPS OUTCOMES BY PRINCIPAL OFFENCE CATEGORY

January 2006

P32-SouthWales



	Convictions		Unsuccessful	
	Number of Defendants	%	Number of Defendants	%
A Homicide	1	50.0%	1	50.0%
B Offences Against The Person	184	65.0%	99	35.0%
C Sexual Offences	11	57.9%	8	42.1%
D Burglary	52	91.2%	5	8.8%
E Robbery	17	73.9%	6	26.1%
F Theft And Handling	297	92.2%	25	7.8%
G Fraud And Forgery	15	93.8%	1	6.3%
H Criminal Damage	95	80.5%	23	19.5%
I Drugs Offences	107	98.2%	2	1.8%
J Public Order Offences	238	83.5%	47	16.5%
K All Other Offences (excluding Motoring)	67	83.8%	13	16.3%
L Motoring Offences	1,327	88.8%	167	11.2%
Admin Finalisations	0	0.0%	133	100.0%
TOTAL	2,411	82.0%	530	18.0%