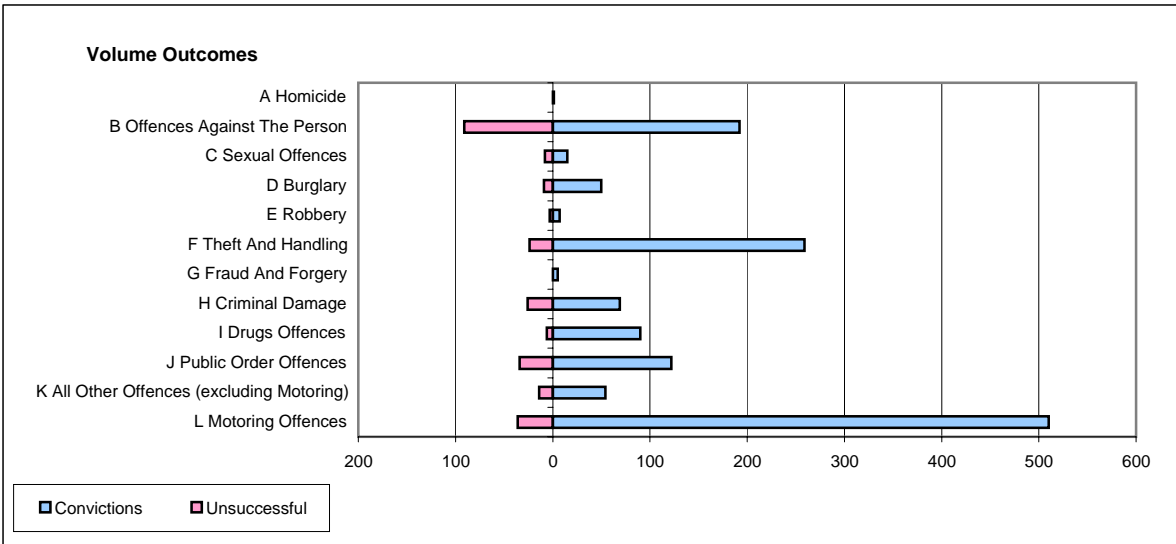
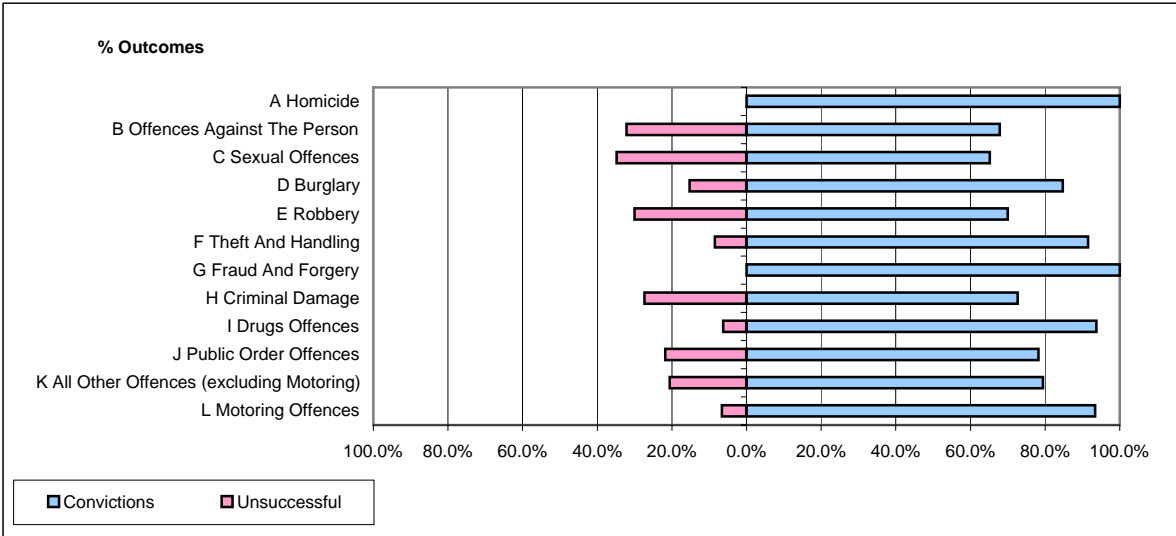


**CPS OUTCOMES BY PRINCIPAL OFFENCE CATEGORY**

January 2006

**P31-Nottinghamshire**



	Convictions		Unsuccessful	
	Number of Defendants	%	Number of Defendants	%
<b>A Homicide</b>	<b>1</b>	<b>100.0%</b>	<b>0</b>	<b>0.0%</b>
<b>B Offences Against The Person</b>	<b>192</b>	<b>67.8%</b>	<b>91</b>	<b>32.2%</b>
<b>C Sexual Offences</b>	<b>15</b>	<b>65.2%</b>	<b>8</b>	<b>34.8%</b>
<b>D Burglary</b>	<b>50</b>	<b>84.7%</b>	<b>9</b>	<b>15.3%</b>
<b>E Robbery</b>	<b>7</b>	<b>70.0%</b>	<b>3</b>	<b>30.0%</b>
<b>F Theft And Handling</b>	<b>259</b>	<b>91.5%</b>	<b>24</b>	<b>8.5%</b>
<b>G Fraud And Forgery</b>	<b>5</b>	<b>100.0%</b>	<b>0</b>	<b>0.0%</b>
<b>H Criminal Damage</b>	<b>69</b>	<b>72.6%</b>	<b>26</b>	<b>27.4%</b>
<b>I Drugs Offences</b>	<b>90</b>	<b>93.8%</b>	<b>6</b>	<b>6.3%</b>
<b>J Public Order Offences</b>	<b>122</b>	<b>78.2%</b>	<b>34</b>	<b>21.8%</b>
<b>K All Other Offences (excluding Motoring)</b>	<b>54</b>	<b>79.4%</b>	<b>14</b>	<b>20.6%</b>
<b>L Motoring Offences</b>	<b>510</b>	<b>93.4%</b>	<b>36</b>	<b>6.6%</b>
<b>Admin Finalisations</b>	<b>0</b>	<b>0.0%</b>	<b>36</b>	<b>100.0%</b>
<b>TOTAL</b>	<b>1,374</b>	<b>82.7%</b>	<b>287</b>	<b>17.3%</b>