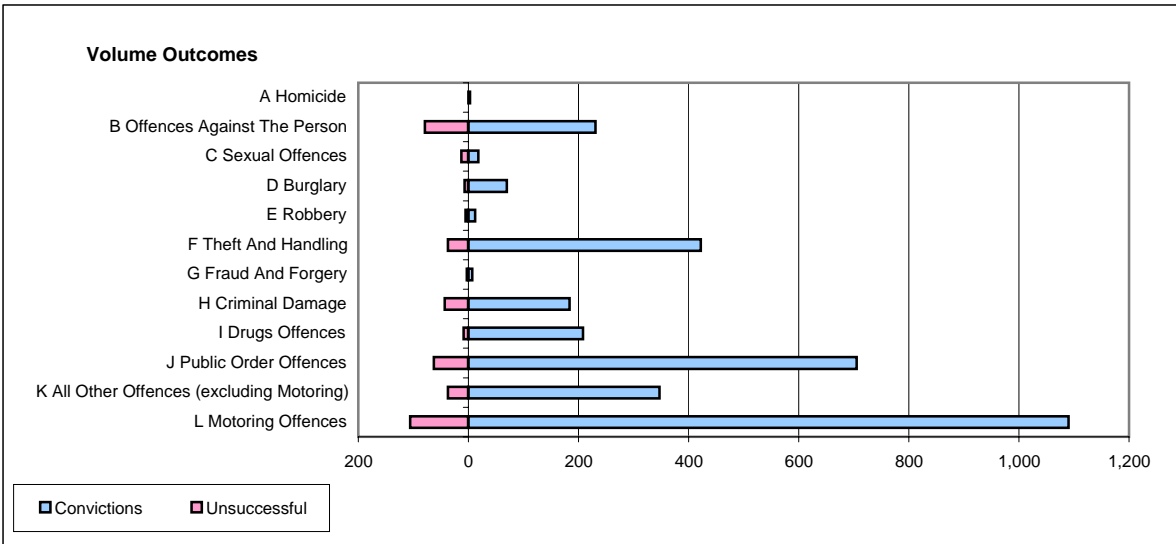
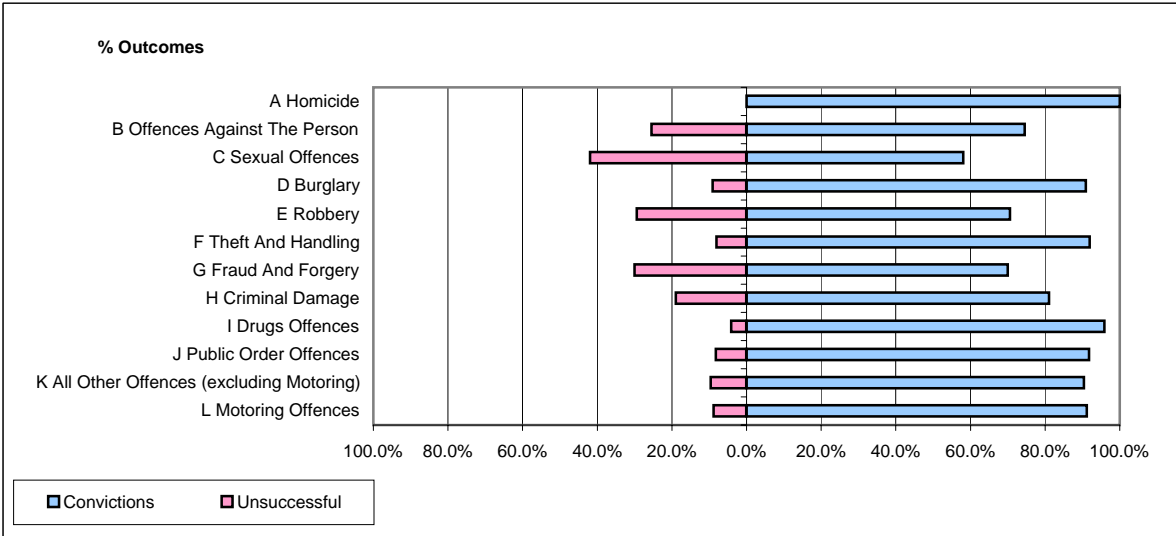


**CPS OUTCOMES BY PRINCIPAL OFFENCE CATEGORY**

January 2006

**P28-Northumbria**



	Convictions		Unsuccessful	
	Number of Defendants	%	Number of Defendants	%
<b>A Homicide</b>	<b>3</b>	<b>100.0%</b>	<b>0</b>	<b>0.0%</b>
<b>B Offences Against The Person</b>	<b>231</b>	<b>74.5%</b>	<b>79</b>	<b>25.5%</b>
<b>C Sexual Offences</b>	<b>18</b>	<b>58.1%</b>	<b>13</b>	<b>41.9%</b>
<b>D Burglary</b>	<b>70</b>	<b>90.9%</b>	<b>7</b>	<b>9.1%</b>
<b>E Robbery</b>	<b>12</b>	<b>70.6%</b>	<b>5</b>	<b>29.4%</b>
<b>F Theft And Handling</b>	<b>422</b>	<b>91.9%</b>	<b>37</b>	<b>8.1%</b>
<b>G Fraud And Forgery</b>	<b>7</b>	<b>70.0%</b>	<b>3</b>	<b>30.0%</b>
<b>H Criminal Damage</b>	<b>184</b>	<b>81.1%</b>	<b>43</b>	<b>18.9%</b>
<b>I Drugs Offences</b>	<b>208</b>	<b>95.9%</b>	<b>9</b>	<b>4.1%</b>
<b>J Public Order Offences</b>	<b>705</b>	<b>91.8%</b>	<b>63</b>	<b>8.2%</b>
<b>K All Other Offences (excluding Motoring)</b>	<b>347</b>	<b>90.4%</b>	<b>37</b>	<b>9.6%</b>
<b>L Motoring Offences</b>	<b>1,090</b>	<b>91.1%</b>	<b>106</b>	<b>8.9%</b>
<b>Admin Finalisations</b>	<b>0</b>	<b>0.0%</b>	<b>78</b>	<b>100.0%</b>
<b>TOTAL</b>	<b>3,297</b>	<b>87.3%</b>	<b>480</b>	<b>12.7%</b>