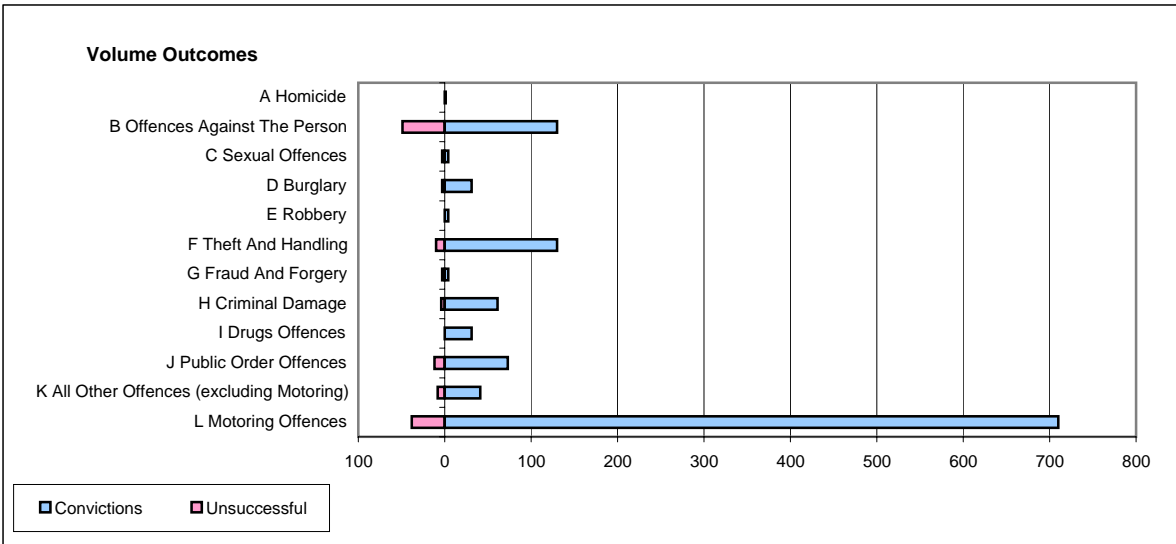
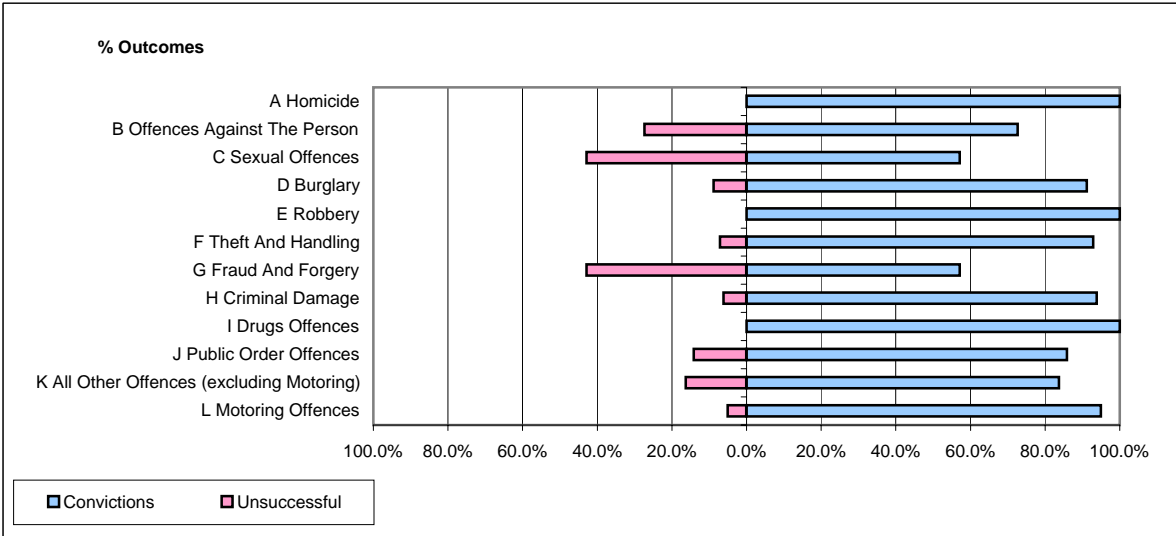


CPS OUTCOMES BY PRINCIPAL OFFENCE CATEGORY

January 2006

P29-NorthWales



	Convictions		Unsuccessful	
	Number of Defendants	%	Number of Defendants	%
A Homicide	1	100.0%	0	0.0%
B Offences Against The Person	130	72.6%	49	27.4%
C Sexual Offences	4	57.1%	3	42.9%
D Burglary	31	91.2%	3	8.8%
E Robbery	4	100.0%	0	0.0%
F Theft And Handling	130	92.9%	10	7.1%
G Fraud And Forgery	4	57.1%	3	42.9%
H Criminal Damage	61	93.8%	4	6.2%
I Drugs Offences	31	100.0%	0	0.0%
J Public Order Offences	73	85.9%	12	14.1%
K All Other Offences (excluding Motoring)	41	83.7%	8	16.3%
L Motoring Offences	710	94.9%	38	5.1%
Admin Finalisations	0	0.0%	12	100.0%
TOTAL	1,220	89.6%	142	10.4%