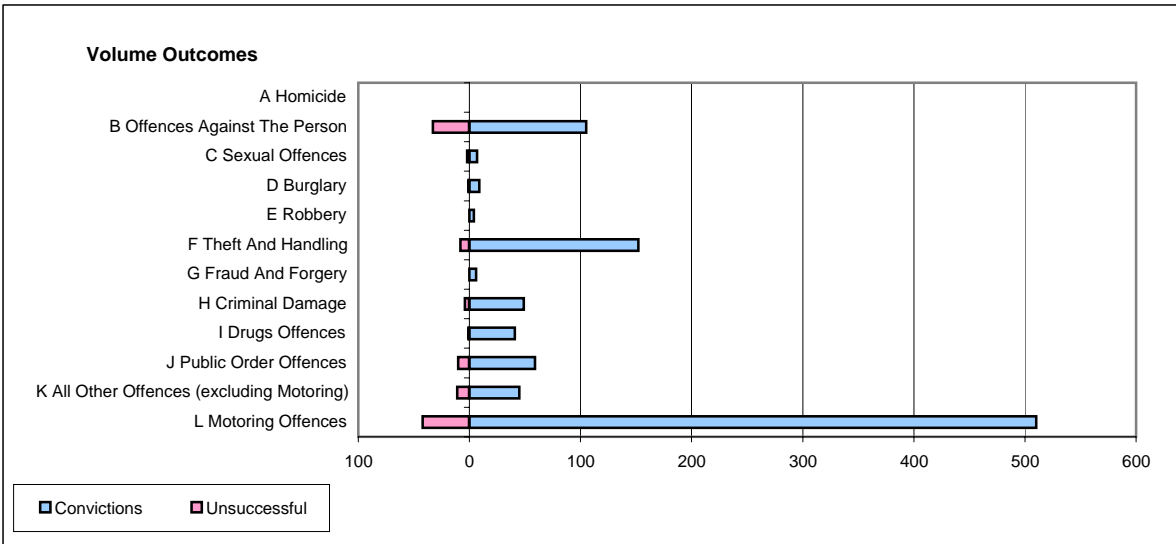
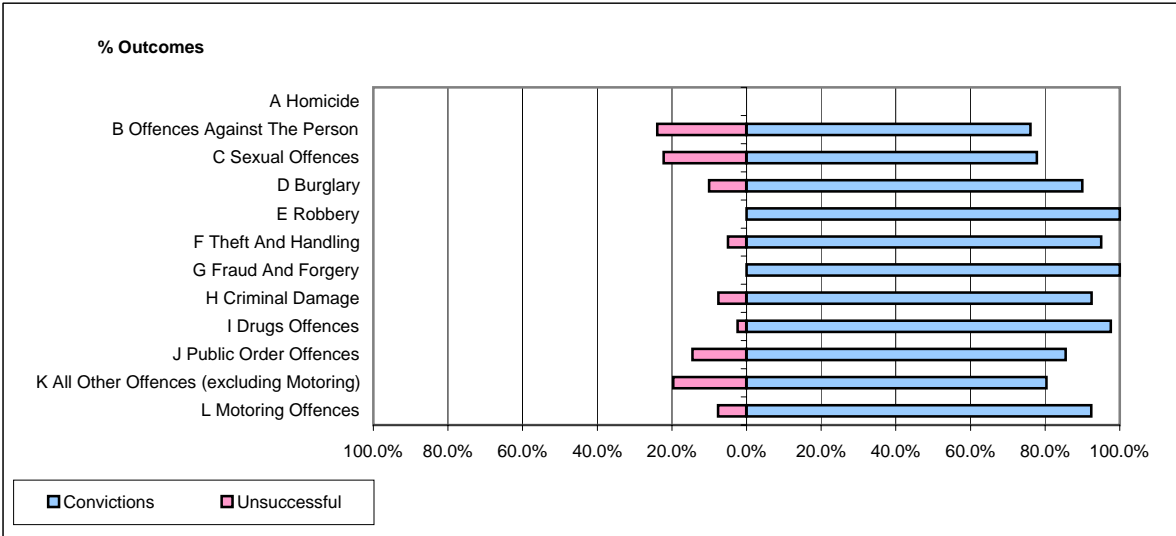


**CPS OUTCOMES BY PRINCIPAL OFFENCE CATEGORY**

January 2006

**P26-Norfolk**



	Convictions		Unsuccessful	
	Number of Defendants	%	Number of Defendants	%
<b>A Homicide</b>	<b>0</b>	<b>#DIV/0!</b>	<b>0</b>	<b>#DIV/0!</b>
<b>B Offences Against The Person</b>	<b>105</b>	<b>76.1%</b>	<b>33</b>	<b>23.9%</b>
<b>C Sexual Offences</b>	<b>7</b>	<b>77.8%</b>	<b>2</b>	<b>22.2%</b>
<b>D Burglary</b>	<b>9</b>	<b>90.0%</b>	<b>1</b>	<b>10.0%</b>
<b>E Robbery</b>	<b>4</b>	<b>100.0%</b>	<b>0</b>	<b>0.0%</b>
<b>F Theft And Handling</b>	<b>152</b>	<b>95.0%</b>	<b>8</b>	<b>5.0%</b>
<b>G Fraud And Forgery</b>	<b>6</b>	<b>100.0%</b>	<b>0</b>	<b>0.0%</b>
<b>H Criminal Damage</b>	<b>49</b>	<b>92.5%</b>	<b>4</b>	<b>7.5%</b>
<b>I Drugs Offences</b>	<b>41</b>	<b>97.6%</b>	<b>1</b>	<b>2.4%</b>
<b>J Public Order Offences</b>	<b>59</b>	<b>85.5%</b>	<b>10</b>	<b>14.5%</b>
<b>K All Other Offences (excluding Motoring)</b>	<b>45</b>	<b>80.4%</b>	<b>11</b>	<b>19.6%</b>
<b>L Motoring Offences</b>	<b>510</b>	<b>92.4%</b>	<b>42</b>	<b>7.6%</b>
<b>Admin Finalisations</b>	<b>0</b>	<b>0.0%</b>	<b>22</b>	<b>100.0%</b>
<b>TOTAL</b>	<b>987</b>	<b>88.0%</b>	<b>134</b>	<b>12.0%</b>