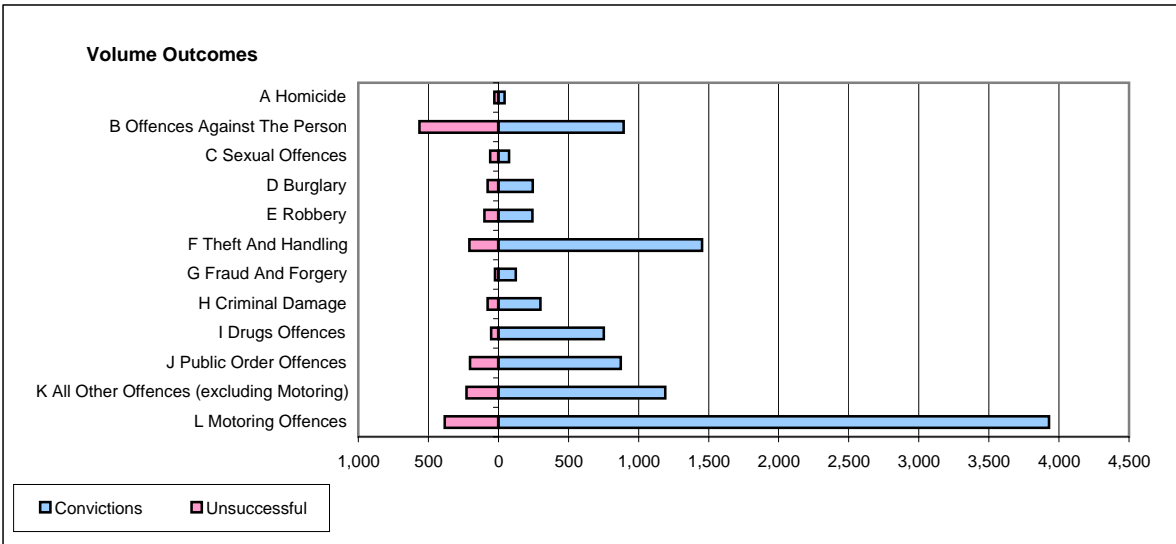
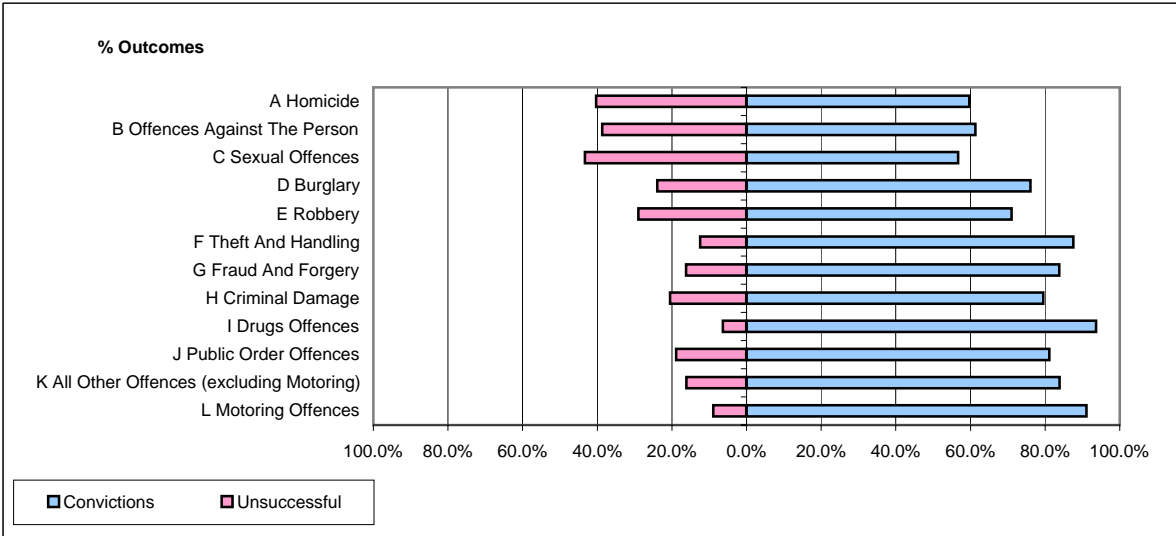


CPS OUTCOMES BY PRINCIPAL OFFENCE CATEGORY

January 2006

P25-Metropolitan&City



	Convictions		Unsuccessful	
	Number of Defendants	%	Number of Defendants	%
A Homicide	43	59.7%	29	40.3%
B Offences Against The Person	894	61.3%	564	38.7%
C Sexual Offences	76	56.7%	58	43.3%
D Burglary	245	76.1%	77	23.9%
E Robbery	243	71.1%	99	28.9%
F Theft And Handling	1,453	87.5%	207	12.5%
G Fraud And Forgery	124	83.8%	24	16.2%
H Criminal Damage	299	79.5%	77	20.5%
I Drugs Offences	751	93.6%	51	6.4%
J Public Order Offences	874	81.2%	203	18.8%
K All Other Offences (excluding Motoring)	1,190	83.9%	229	16.1%
L Motoring Offences	3,929	91.1%	384	8.9%
Admin Finalisations	0	0.0%	842	100.0%
TOTAL	10,121	78.1%	2,844	21.9%