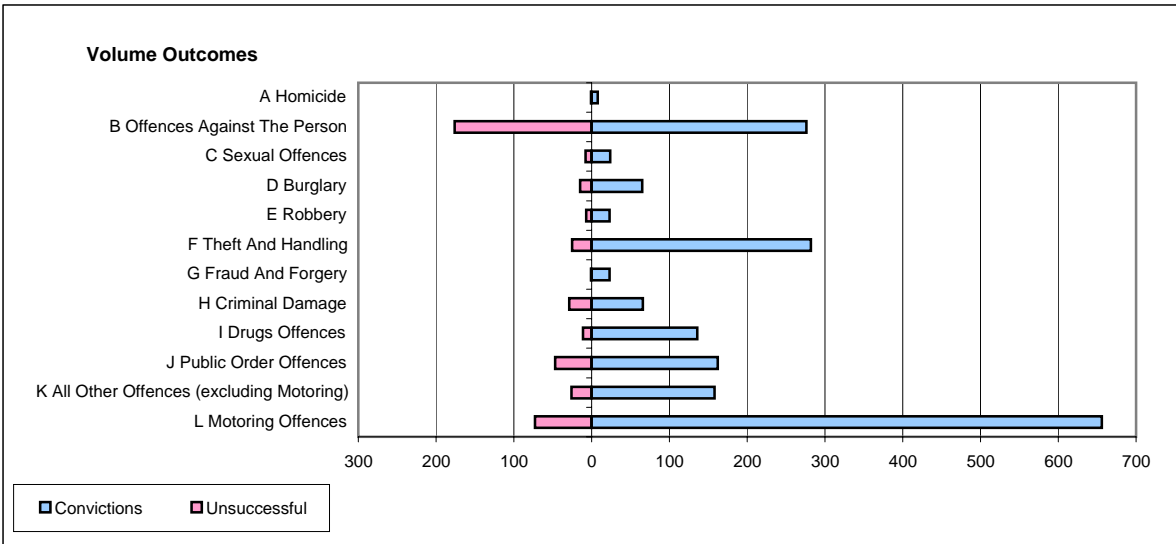
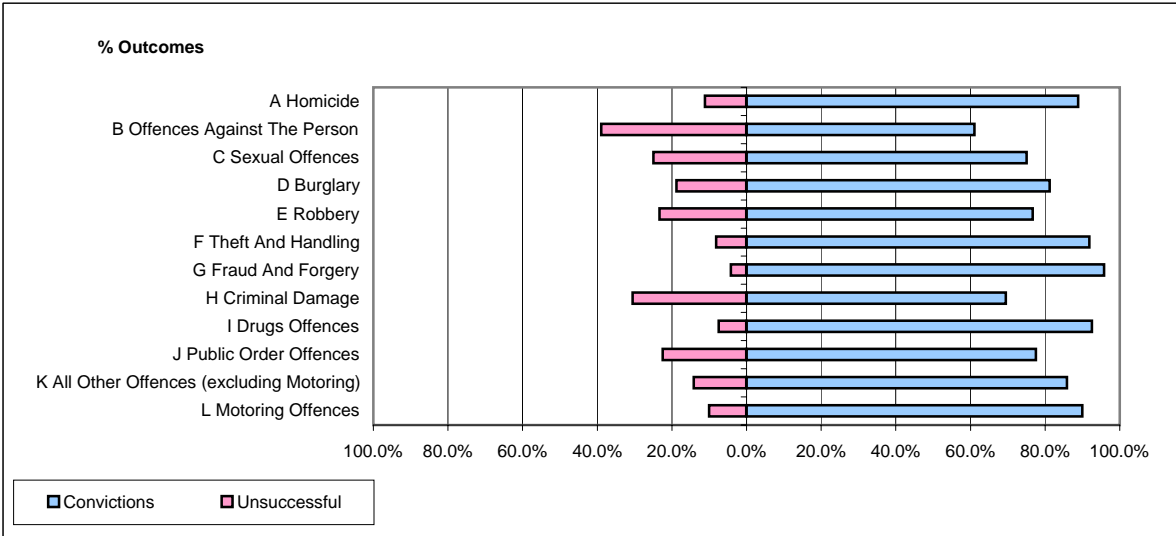


CPS OUTCOMES BY PRINCIPAL OFFENCE CATEGORY

January 2006

P24-Merseyside



| | Convictions | | Unsuccessful | |
|--|----------------------|--------------|----------------------|---------------|
| | Number of Defendants | % | Number of Defendants | % |
| A Homicide | 8 | 88.9% | 1 | 11.1% |
| B Offences Against The Person | 276 | 61.1% | 176 | 38.9% |
| C Sexual Offences | 24 | 75.0% | 8 | 25.0% |
| D Burglary | 65 | 81.3% | 15 | 18.8% |
| E Robbery | 23 | 76.7% | 7 | 23.3% |
| F Theft And Handling | 282 | 91.9% | 25 | 8.1% |
| G Fraud And Forgery | 23 | 95.8% | 1 | 4.2% |
| H Criminal Damage | 66 | 69.5% | 29 | 30.5% |
| I Drugs Offences | 136 | 92.5% | 11 | 7.5% |
| J Public Order Offences | 162 | 77.5% | 47 | 22.5% |
| K All Other Offences (excluding Motoring) | 158 | 85.9% | 26 | 14.1% |
| L Motoring Offences | 656 | 90.0% | 73 | 10.0% |
| Admin Finalisations | 0 | 0.0% | 76 | 100.0% |
| TOTAL | 1,879 | 79.1% | 495 | 20.9% |