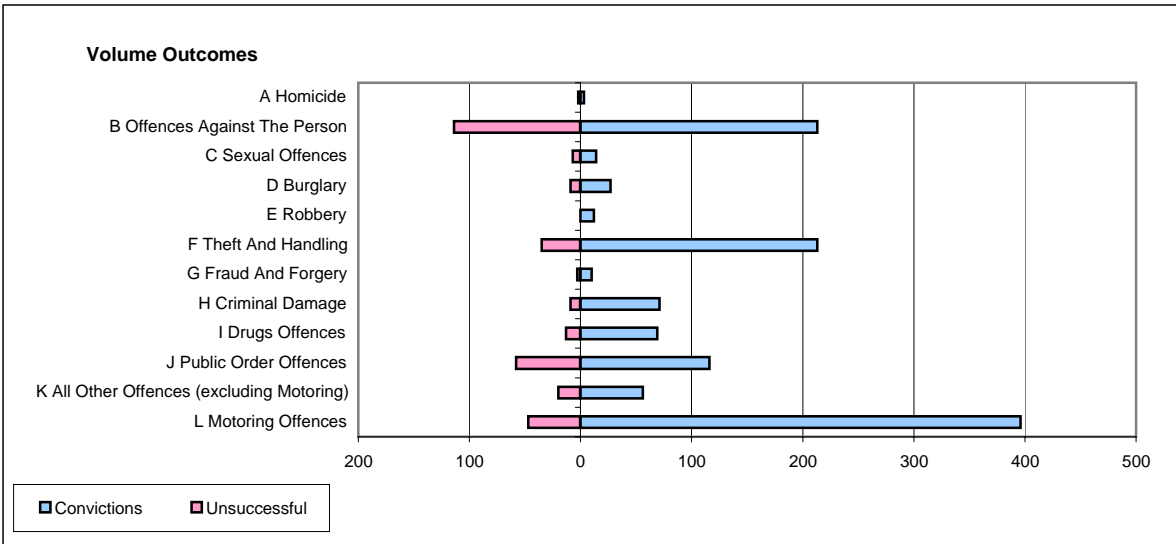
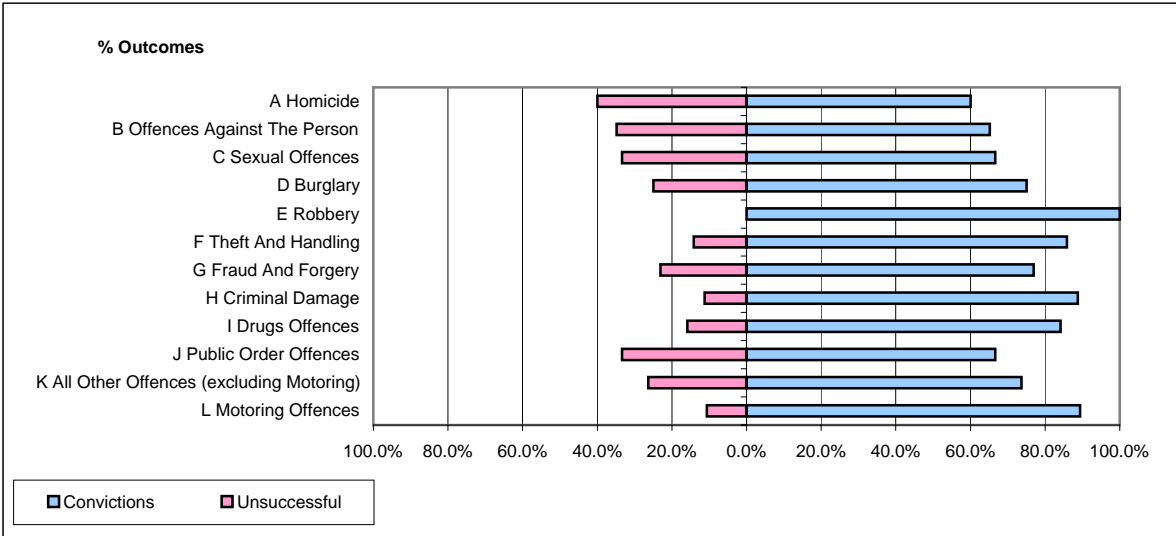


CPS OUTCOMES BY PRINCIPAL OFFENCE CATEGORY

January 2006

P22-Leicestershire



	Convictions		Unsuccessful	
	Number of Defendants	%	Number of Defendants	%
A Homicide	3	60.0%	2	40.0%
B Offences Against The Person	213	65.1%	114	34.9%
C Sexual Offences	14	66.7%	7	33.3%
D Burglary	27	75.0%	9	25.0%
E Robbery	12	100.0%	0	0.0%
F Theft And Handling	213	85.9%	35	14.1%
G Fraud And Forgery	10	76.9%	3	23.1%
H Criminal Damage	71	88.8%	9	11.3%
I Drugs Offences	69	84.1%	13	15.9%
J Public Order Offences	116	66.7%	58	33.3%
K All Other Offences (excluding Motoring)	56	73.7%	20	26.3%
L Motoring Offences	396	89.4%	47	10.6%
Admin Finalisations	0	0.0%	57	100.0%
TOTAL	1,200	76.2%	374	23.8%