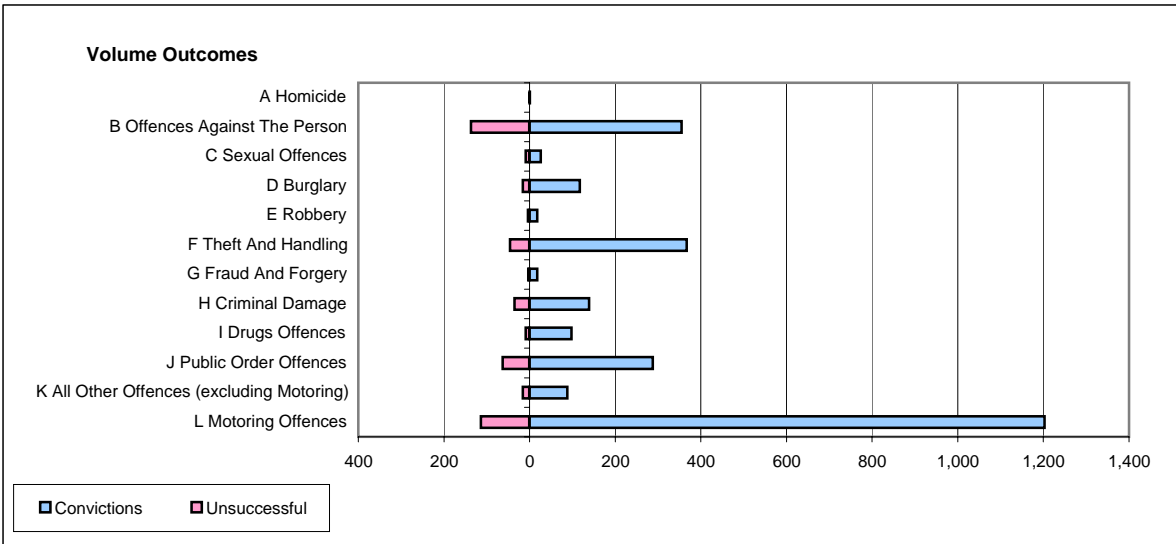
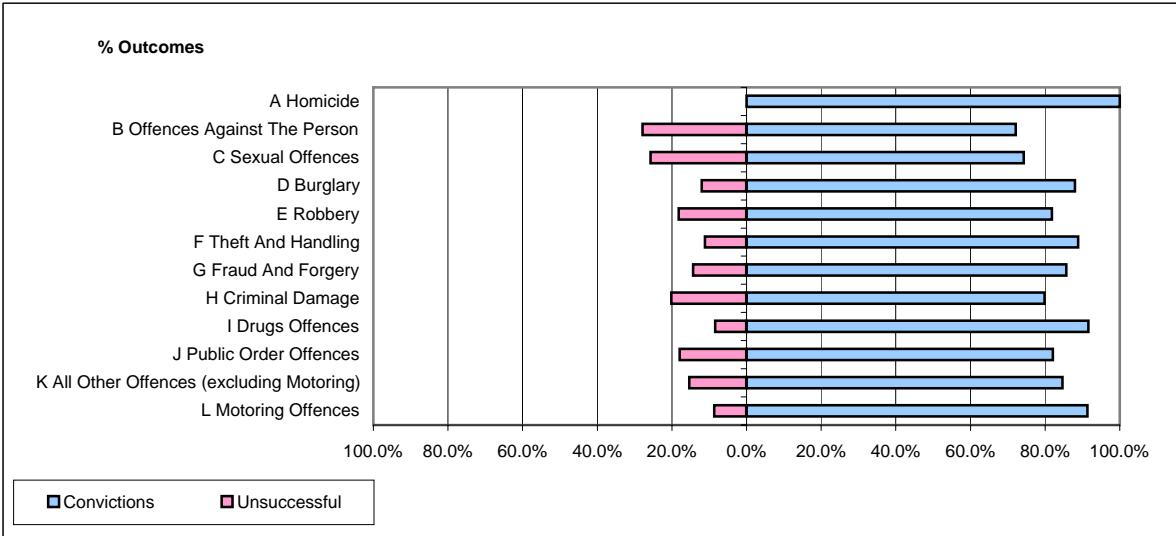


CPS OUTCOMES BY PRINCIPAL OFFENCE CATEGORY

January 2006

P21-Lancashire



	Convictions		Unsuccessful	
	Number of Defendants	%	Number of Defendants	%
A Homicide	1	100.0%	0	0.0%
B Offences Against The Person	355	72.2%	137	27.8%
C Sexual Offences	26	74.3%	9	25.7%
D Burglary	117	88.0%	16	12.0%
E Robbery	18	81.8%	4	18.2%
F Theft And Handling	367	88.9%	46	11.1%
G Fraud And Forgery	18	85.7%	3	14.3%
H Criminal Damage	139	79.9%	35	20.1%
I Drugs Offences	98	91.6%	9	8.4%
J Public Order Offences	288	82.1%	63	17.9%
K All Other Offences (excluding Motoring)	88	84.6%	16	15.4%
L Motoring Offences	1,203	91.3%	114	8.7%
Admin Finalisations	0	0.0%	66	100.0%
TOTAL	2,718	84.0%	518	16.0%