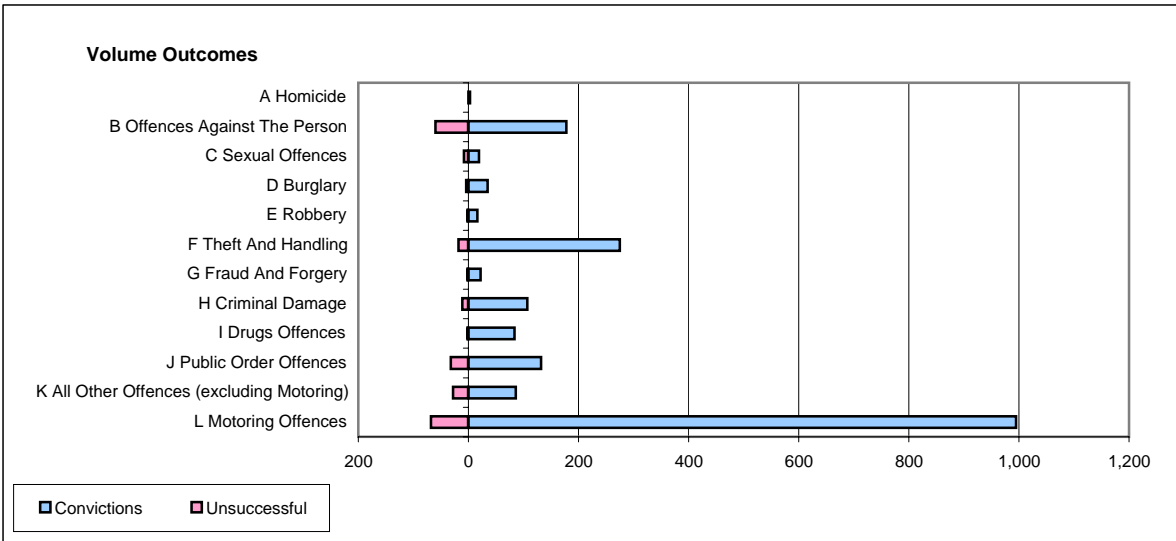
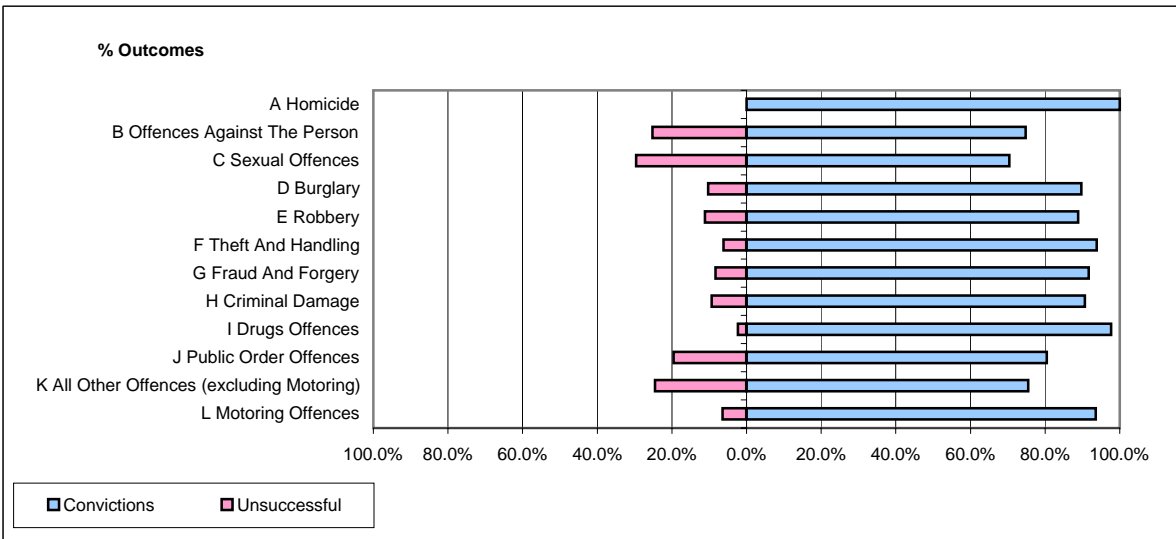


CPS OUTCOMES BY PRINCIPAL OFFENCE CATEGORY

January 2006

P20-Kent



	Convictions		Unsuccessful	
	Number of Defendants	%	Number of Defendants	%
A Homicide	3	100.0%	0	0.0%
B Offences Against The Person	178	74.8%	60	25.2%
C Sexual Offences	19	70.4%	8	29.6%
D Burglary	35	89.7%	4	10.3%
E Robbery	16	88.9%	2	11.1%
F Theft And Handling	275	93.9%	18	6.1%
G Fraud And Forgery	22	91.7%	2	8.3%
H Criminal Damage	107	90.7%	11	9.3%
I Drugs Offences	84	97.7%	2	2.3%
J Public Order Offences	132	80.5%	32	19.5%
K All Other Offences (excluding Motoring)	86	75.4%	28	24.6%
L Motoring Offences	995	93.6%	68	6.4%
Admin Finalisations	0	0.0%	40	100.0%
TOTAL	1,952	87.7%	275	12.3%