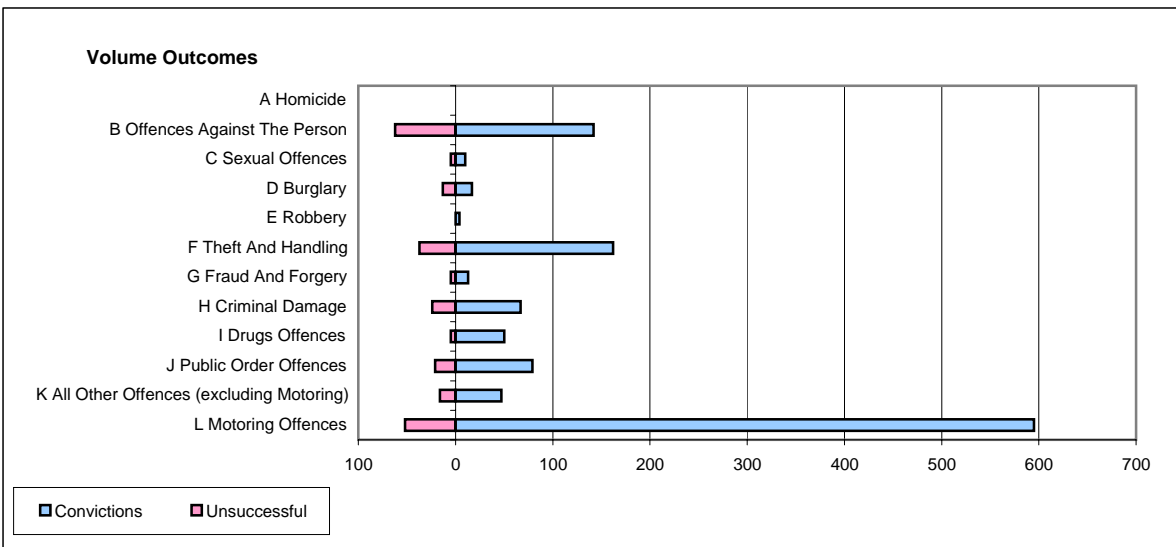
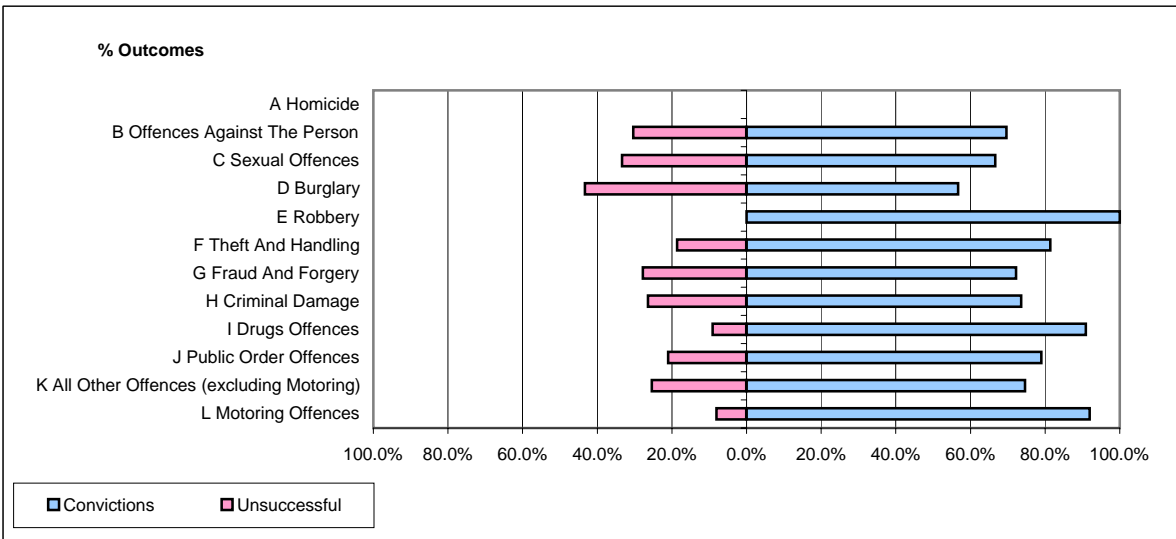


**CPS OUTCOMES BY PRINCIPAL OFFENCE CATEGORY**

January 2006

**P18-Hertfordshire**



	Convictions		Unsuccessful	
	Number of Defendants	%	Number of Defendants	%
<b>A Homicide</b>	<b>0</b>	<b>#DIV/0!</b>	<b>0</b>	<b>#DIV/0!</b>
<b>B Offences Against The Person</b>	<b>142</b>	<b>69.6%</b>	<b>62</b>	<b>30.4%</b>
<b>C Sexual Offences</b>	<b>10</b>	<b>66.7%</b>	<b>5</b>	<b>33.3%</b>
<b>D Burglary</b>	<b>17</b>	<b>56.7%</b>	<b>13</b>	<b>43.3%</b>
<b>E Robbery</b>	<b>4</b>	<b>100.0%</b>	<b>0</b>	<b>0.0%</b>
<b>F Theft And Handling</b>	<b>162</b>	<b>81.4%</b>	<b>37</b>	<b>18.6%</b>
<b>G Fraud And Forgery</b>	<b>13</b>	<b>72.2%</b>	<b>5</b>	<b>27.8%</b>
<b>H Criminal Damage</b>	<b>67</b>	<b>73.6%</b>	<b>24</b>	<b>26.4%</b>
<b>I Drugs Offences</b>	<b>50</b>	<b>90.9%</b>	<b>5</b>	<b>9.1%</b>
<b>J Public Order Offences</b>	<b>79</b>	<b>79.0%</b>	<b>21</b>	<b>21.0%</b>
<b>K All Other Offences (excluding Motoring)</b>	<b>47</b>	<b>74.6%</b>	<b>16</b>	<b>25.4%</b>
<b>L Motoring Offences</b>	<b>595</b>	<b>92.0%</b>	<b>52</b>	<b>8.0%</b>
<b>Admin Finalisations</b>	<b>0</b>	<b>0.0%</b>	<b>37</b>	<b>100.0%</b>
<b>TOTAL</b>	<b>1,186</b>	<b>81.1%</b>	<b>277</b>	<b>18.9%</b>