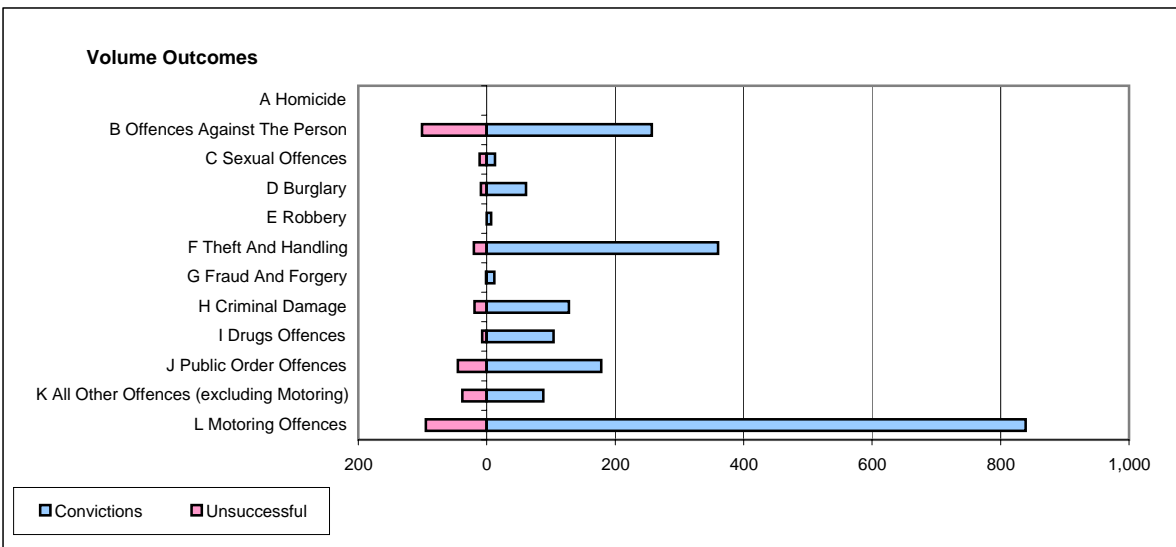
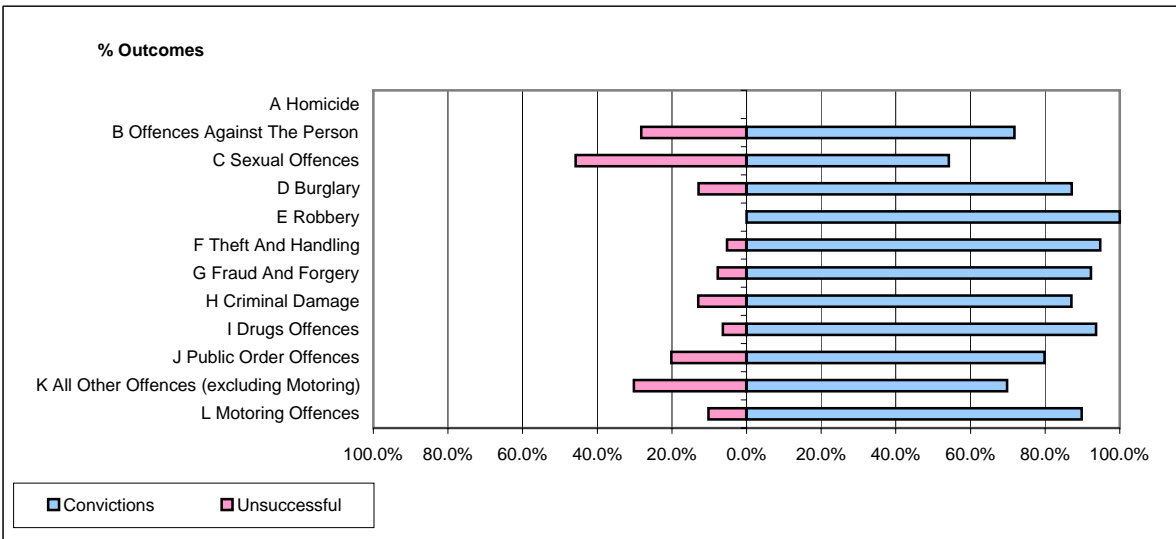


**CPS OUTCOMES BY PRINCIPAL OFFENCE CATEGORY**

January 2006

**P17-Hampshire**



	Convictions		Unsuccessful	
	Number of Defendants	%	Number of Defendants	%
<b>A Homicide</b>	<b>0</b>	<b>#DIV/0!</b>	<b>0</b>	<b>#DIV/0!</b>
<b>B Offences Against The Person</b>	<b>257</b>	<b>71.8%</b>	<b>101</b>	<b>28.2%</b>
<b>C Sexual Offences</b>	<b>13</b>	<b>54.2%</b>	<b>11</b>	<b>45.8%</b>
<b>D Burglary</b>	<b>61</b>	<b>87.1%</b>	<b>9</b>	<b>12.9%</b>
<b>E Robbery</b>	<b>7</b>	<b>100.0%</b>	<b>0</b>	<b>0.0%</b>
<b>F Theft And Handling</b>	<b>360</b>	<b>94.7%</b>	<b>20</b>	<b>5.3%</b>
<b>G Fraud And Forgery</b>	<b>12</b>	<b>92.3%</b>	<b>1</b>	<b>7.7%</b>
<b>H Criminal Damage</b>	<b>128</b>	<b>87.1%</b>	<b>19</b>	<b>12.9%</b>
<b>I Drugs Offences</b>	<b>104</b>	<b>93.7%</b>	<b>7</b>	<b>6.3%</b>
<b>J Public Order Offences</b>	<b>178</b>	<b>79.8%</b>	<b>45</b>	<b>20.2%</b>
<b>K All Other Offences (excluding Motoring)</b>	<b>88</b>	<b>69.8%</b>	<b>38</b>	<b>30.2%</b>
<b>L Motoring Offences</b>	<b>839</b>	<b>89.8%</b>	<b>95</b>	<b>10.2%</b>
<b>Admin Finalisations</b>	<b>0</b>	<b>0.0%</b>	<b>32</b>	<b>100.0%</b>
<b>TOTAL</b>	<b>2,047</b>	<b>84.4%</b>	<b>378</b>	<b>15.6%</b>