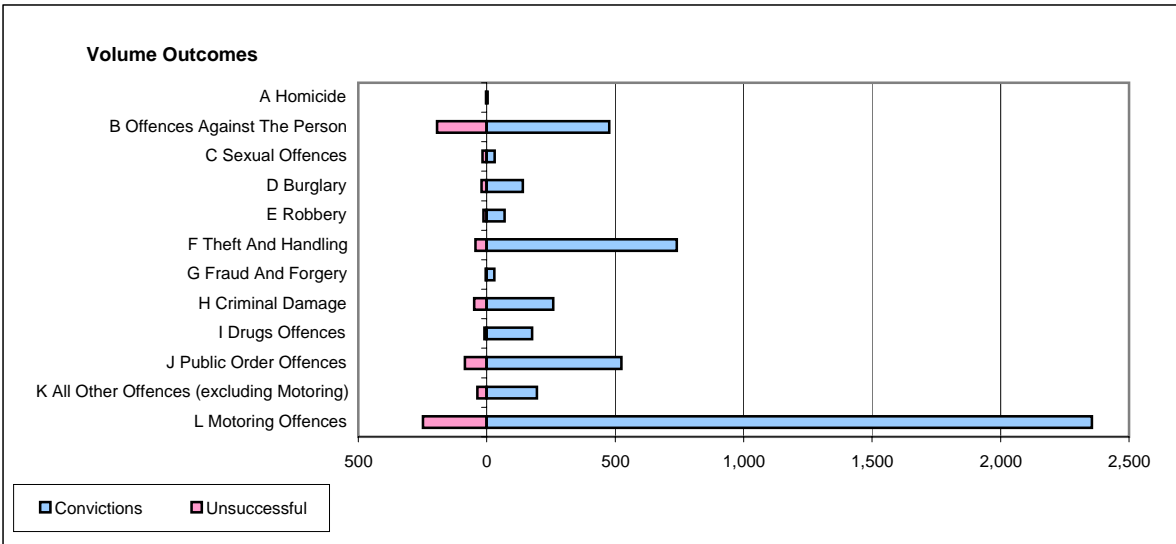
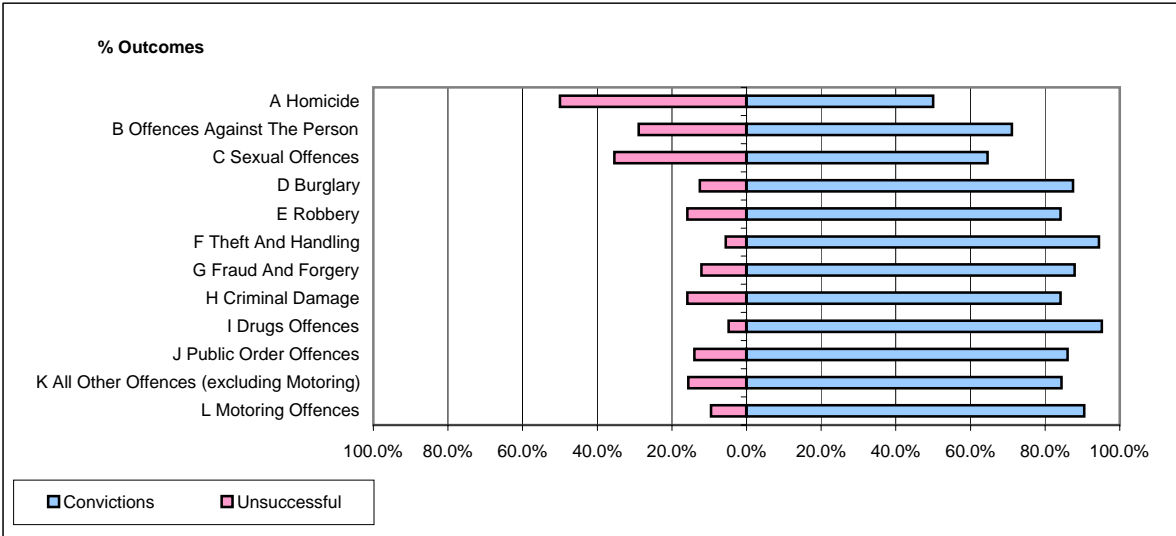


CPS OUTCOMES BY PRINCIPAL OFFENCE CATEGORY

January 2006

P15-GreaterManchester



	Convictions		Unsuccessful	
	Number of Defendants	%	Number of Defendants	%
A Homicide	3	50.0%	3	50.0%
B Offences Against The Person	477	71.1%	194	28.9%
C Sexual Offences	31	64.6%	17	35.4%
D Burglary	140	87.5%	20	12.5%
E Robbery	69	84.1%	13	15.9%
F Theft And Handling	740	94.4%	44	5.6%
G Fraud And Forgery	29	87.9%	4	12.1%
H Criminal Damage	259	84.1%	49	15.9%
I Drugs Offences	177	95.2%	9	4.8%
J Public Order Offences	524	86.0%	85	14.0%
K All Other Offences (excluding Motoring)	195	84.4%	36	15.6%
L Motoring Offences	2,356	90.5%	248	9.5%
Admin Finalisations	0	0.0%	158	100.0%
TOTAL	5,000	85.0%	880	15.0%