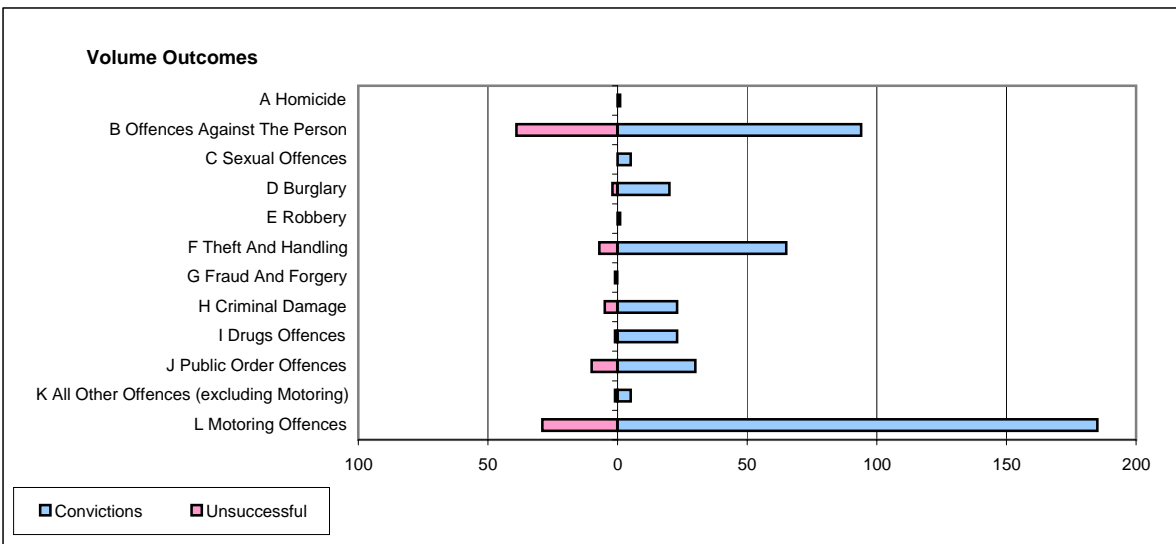
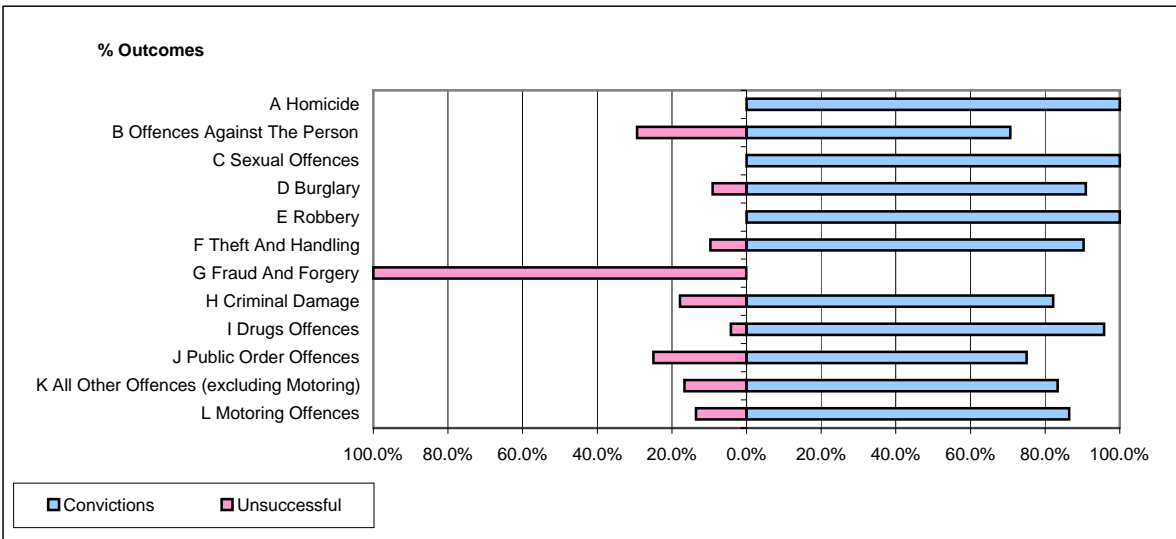


CPS OUTCOMES BY PRINCIPAL OFFENCE CATEGORY

January 2006

P14-Gloucestershire



	Convictions		Unsuccessful	
	Number of Defendants	%	Number of Defendants	%
A Homicide	1	100.0%	0	0.0%
B Offences Against The Person	94	70.7%	39	29.3%
C Sexual Offences	5	100.0%	0	0.0%
D Burglary	20	90.9%	2	9.1%
E Robbery	1	100.0%	0	0.0%
F Theft And Handling	65	90.3%	7	9.7%
G Fraud And Forgery	0	0.0%	1	100.0%
H Criminal Damage	23	82.1%	5	17.9%
I Drugs Offences	23	95.8%	1	4.2%
J Public Order Offences	30	75.0%	10	25.0%
K All Other Offences (excluding Motoring)	5	83.3%	1	16.7%
L Motoring Offences	185	86.4%	29	13.6%
Admin Finalisations	0	0.0%	16	100.0%
TOTAL	452	80.3%	111	19.7%