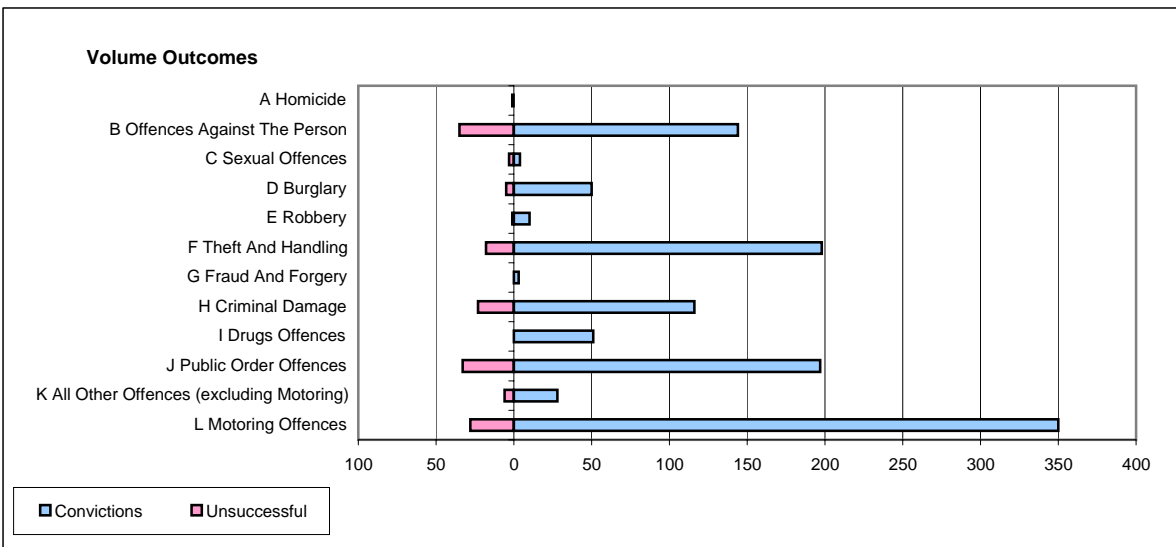
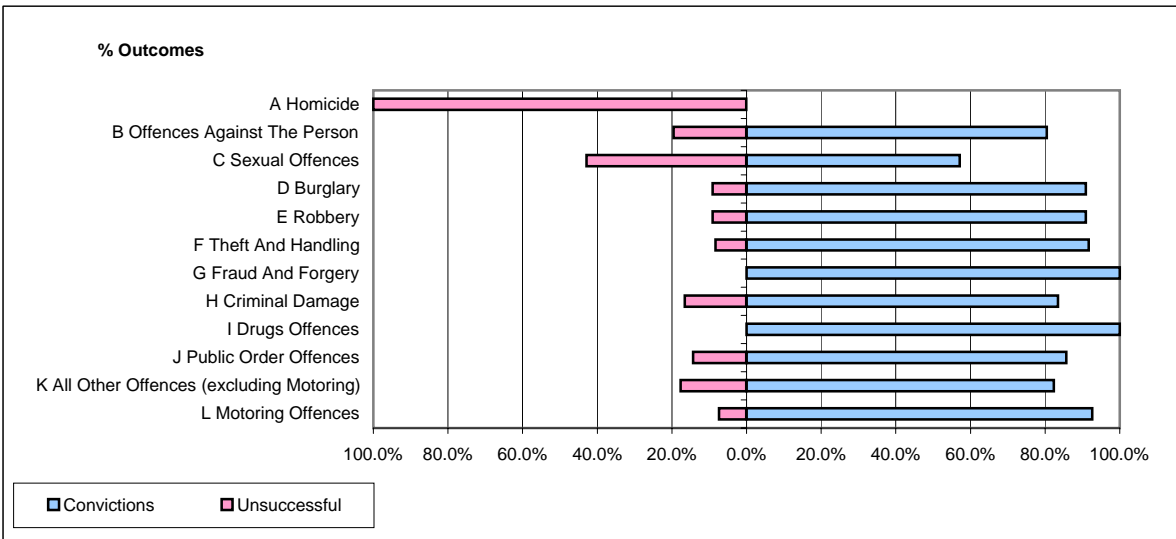


CPS OUTCOMES BY PRINCIPAL OFFENCE CATEGORY

January 2006

P11-Durham



	Convictions		Unsuccessful	
	Number of Defendants	%	Number of Defendants	%
A Homicide	0	0.0%	1	100.0%
B Offences Against The Person	144	80.4%	35	19.6%
C Sexual Offences	4	57.1%	3	42.9%
D Burglary	50	90.9%	5	9.1%
E Robbery	10	90.9%	1	9.1%
F Theft And Handling	198	91.7%	18	8.3%
G Fraud And Forgery	3	100.0%	0	0.0%
H Criminal Damage	116	83.5%	23	16.5%
I Drugs Offences	51	100.0%	0	0.0%
J Public Order Offences	197	85.7%	33	14.3%
K All Other Offences (excluding Motoring)	28	82.4%	6	17.6%
L Motoring Offences	350	92.6%	28	7.4%
Admin Finalisations	0	0.0%	21	100.0%
TOTAL	1,151	86.9%	174	13.1%