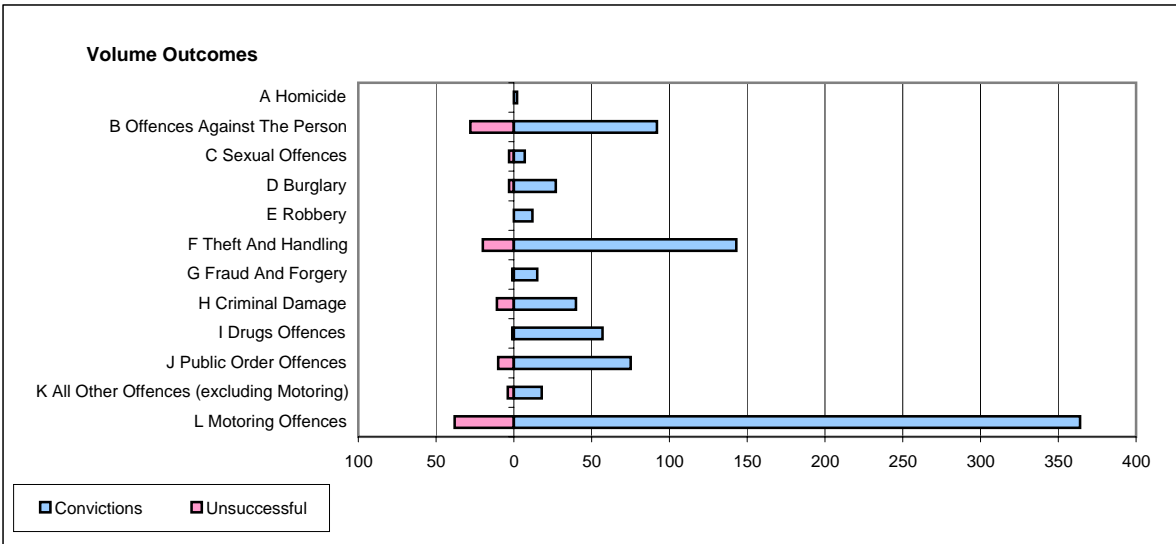
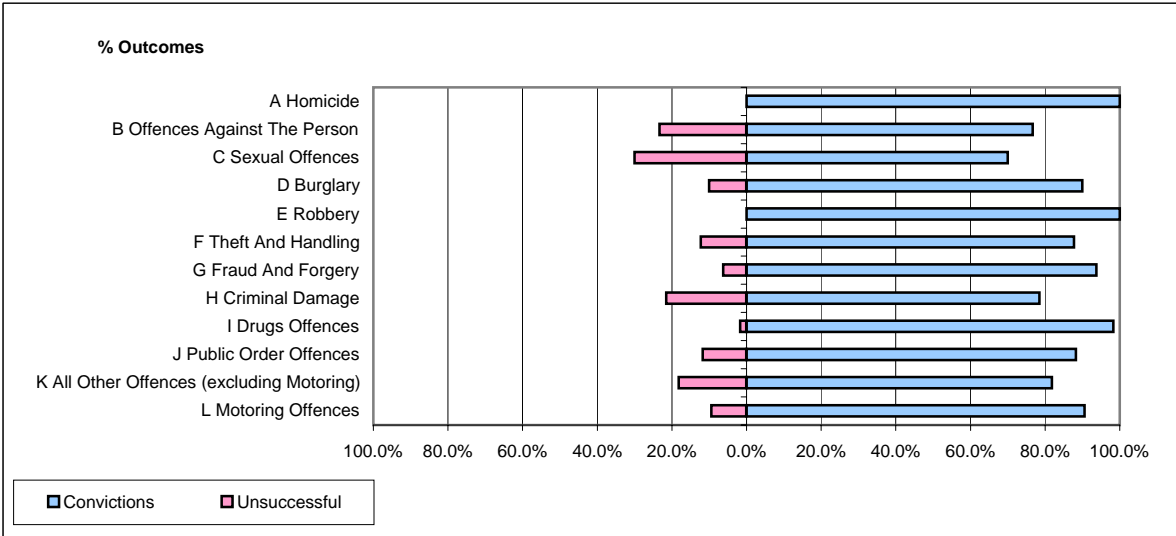


CPS OUTCOMES BY PRINCIPAL OFFENCE CATEGORY

January 2006

P10-Dorset



	Convictions		Unsuccessful	
	Number of Defendants	%	Number of Defendants	%
A Homicide	2	100.0%	0	0.0%
B Offences Against The Person	92	76.7%	28	23.3%
C Sexual Offences	7	70.0%	3	30.0%
D Burglary	27	90.0%	3	10.0%
E Robbery	12	100.0%	0	0.0%
F Theft And Handling	143	87.7%	20	12.3%
G Fraud And Forgery	15	93.8%	1	6.3%
H Criminal Damage	40	78.4%	11	21.6%
I Drugs Offences	57	98.3%	1	1.7%
J Public Order Offences	75	88.2%	10	11.8%
K All Other Offences (excluding Motoring)	18	81.8%	4	18.2%
L Motoring Offences	364	90.5%	38	9.5%
Admin Finalisations	0	0.0%	17	100.0%
TOTAL	852	86.2%	136	13.8%