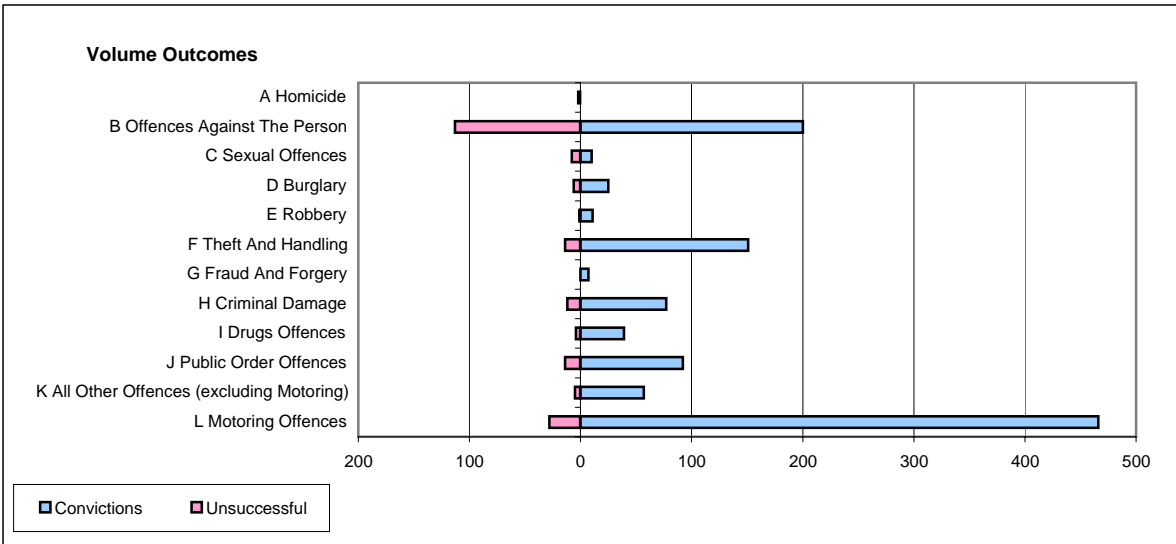
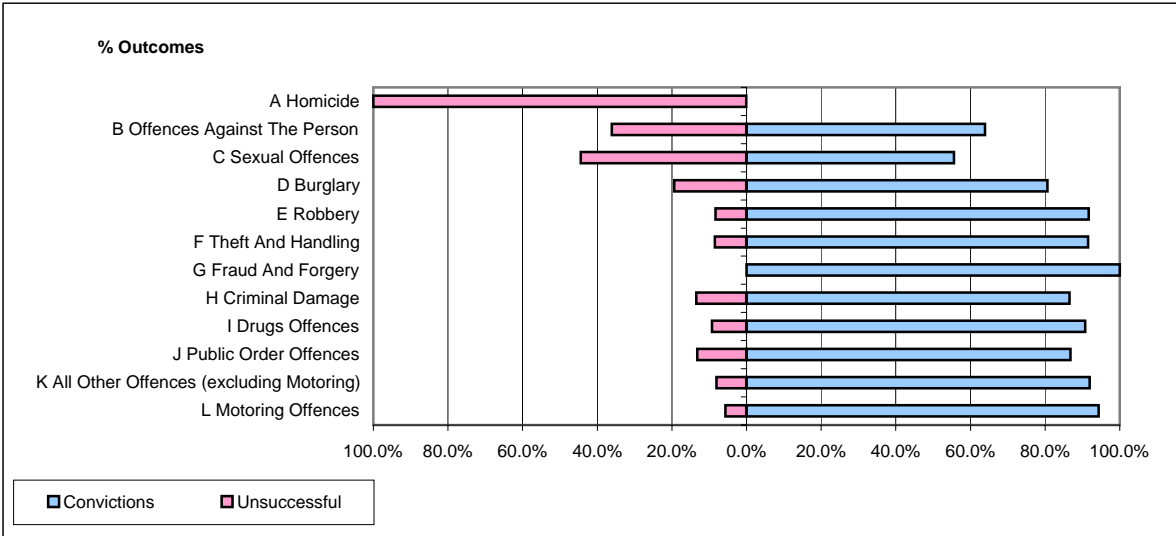


**CPS OUTCOMES BY PRINCIPAL OFFENCE CATEGORY**

January 2006

**P08-Derbyshire**



	Convictions		Unsuccessful	
	Number of Defendants	%	Number of Defendants	%
<b>A Homicide</b>	<b>0</b>	<b>0.0%</b>	<b>2</b>	<b>100.0%</b>
<b>B Offences Against The Person</b>	<b>200</b>	<b>63.9%</b>	<b>113</b>	<b>36.1%</b>
<b>C Sexual Offences</b>	<b>10</b>	<b>55.6%</b>	<b>8</b>	<b>44.4%</b>
<b>D Burglary</b>	<b>25</b>	<b>80.6%</b>	<b>6</b>	<b>19.4%</b>
<b>E Robbery</b>	<b>11</b>	<b>91.7%</b>	<b>1</b>	<b>8.3%</b>
<b>F Theft And Handling</b>	<b>151</b>	<b>91.5%</b>	<b>14</b>	<b>8.5%</b>
<b>G Fraud And Forgery</b>	<b>7</b>	<b>100.0%</b>	<b>0</b>	<b>0.0%</b>
<b>H Criminal Damage</b>	<b>77</b>	<b>86.5%</b>	<b>12</b>	<b>13.5%</b>
<b>I Drugs Offences</b>	<b>39</b>	<b>90.7%</b>	<b>4</b>	<b>9.3%</b>
<b>J Public Order Offences</b>	<b>92</b>	<b>86.8%</b>	<b>14</b>	<b>13.2%</b>
<b>K All Other Offences (excluding Motoring)</b>	<b>57</b>	<b>91.9%</b>	<b>5</b>	<b>8.1%</b>
<b>L Motoring Offences</b>	<b>466</b>	<b>94.3%</b>	<b>28</b>	<b>5.7%</b>
<b>Admin Finalisations</b>	<b>0</b>	<b>0.0%</b>	<b>29</b>	<b>100.0%</b>
<b>TOTAL</b>	<b>1,135</b>	<b>82.8%</b>	<b>236</b>	<b>17.2%</b>