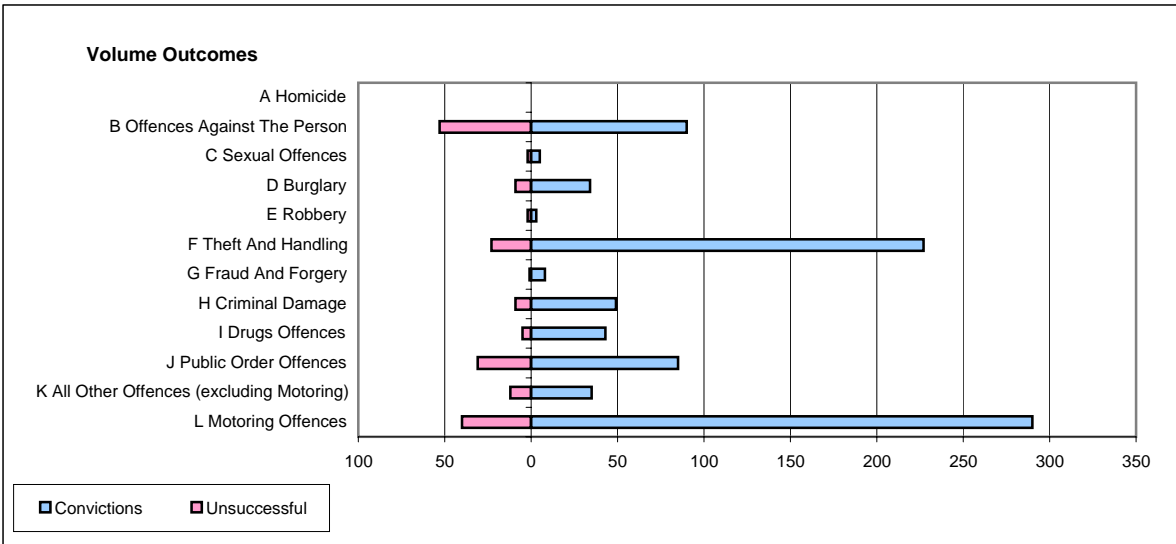
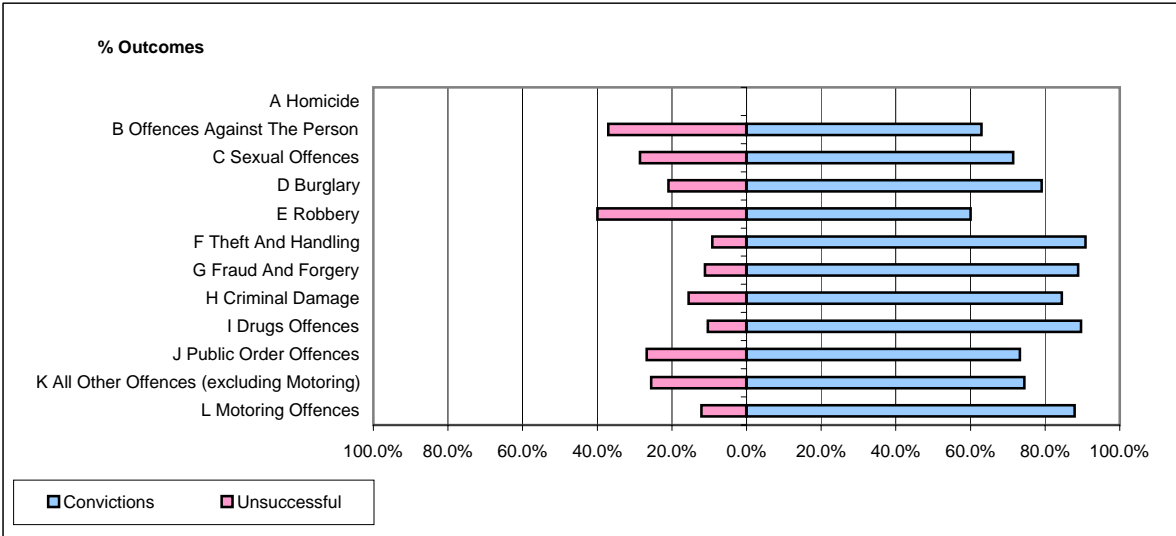


**CPS OUTCOMES BY PRINCIPAL OFFENCE CATEGORY**

**January 2006**

**P06-Cleveland**



	Convictions		Unsuccessful	
	Number of Defendants	%	Number of Defendants	%
<b>A Homicide</b>	<b>0</b>	<b>#DIV/0!</b>	<b>0</b>	<b>#DIV/0!</b>
<b>B Offences Against The Person</b>	<b>90</b>	<b>62.9%</b>	<b>53</b>	<b>37.1%</b>
<b>C Sexual Offences</b>	<b>5</b>	<b>71.4%</b>	<b>2</b>	<b>28.6%</b>
<b>D Burglary</b>	<b>34</b>	<b>79.1%</b>	<b>9</b>	<b>20.9%</b>
<b>E Robbery</b>	<b>3</b>	<b>60.0%</b>	<b>2</b>	<b>40.0%</b>
<b>F Theft And Handling</b>	<b>227</b>	<b>90.8%</b>	<b>23</b>	<b>9.2%</b>
<b>G Fraud And Forgery</b>	<b>8</b>	<b>88.9%</b>	<b>1</b>	<b>11.1%</b>
<b>H Criminal Damage</b>	<b>49</b>	<b>84.5%</b>	<b>9</b>	<b>15.5%</b>
<b>I Drugs Offences</b>	<b>43</b>	<b>89.6%</b>	<b>5</b>	<b>10.4%</b>
<b>J Public Order Offences</b>	<b>85</b>	<b>73.3%</b>	<b>31</b>	<b>26.7%</b>
<b>K All Other Offences (excluding Motoring)</b>	<b>35</b>	<b>74.5%</b>	<b>12</b>	<b>25.5%</b>
<b>L Motoring Offences</b>	<b>290</b>	<b>87.9%</b>	<b>40</b>	<b>12.1%</b>
<b>Admin Finalisations</b>	<b>0</b>	<b>0.0%</b>	<b>14</b>	<b>100.0%</b>
<b>TOTAL</b>	<b>869</b>	<b>81.2%</b>	<b>201</b>	<b>18.8%</b>