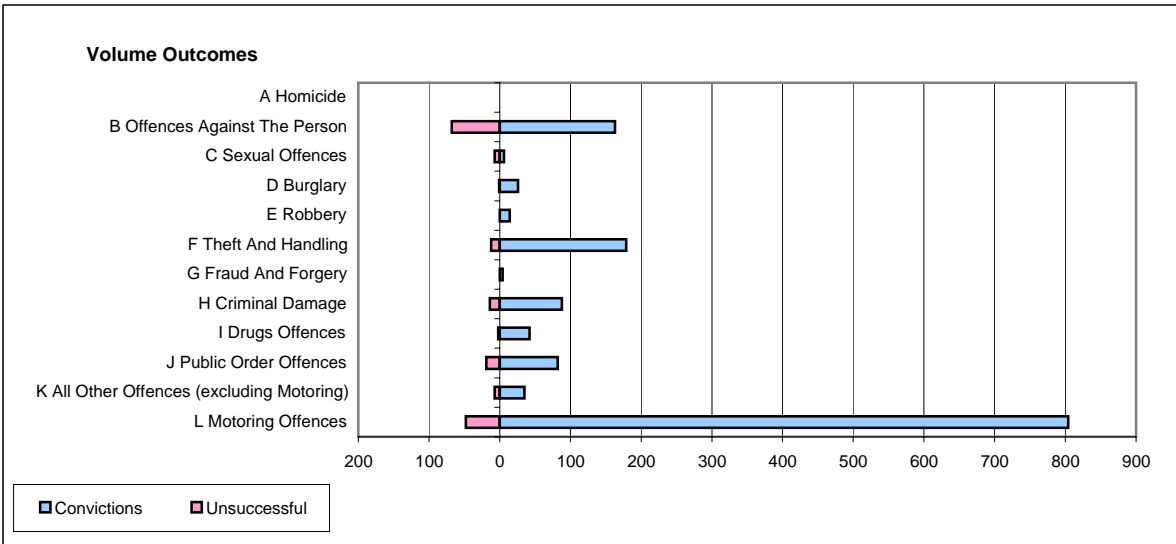
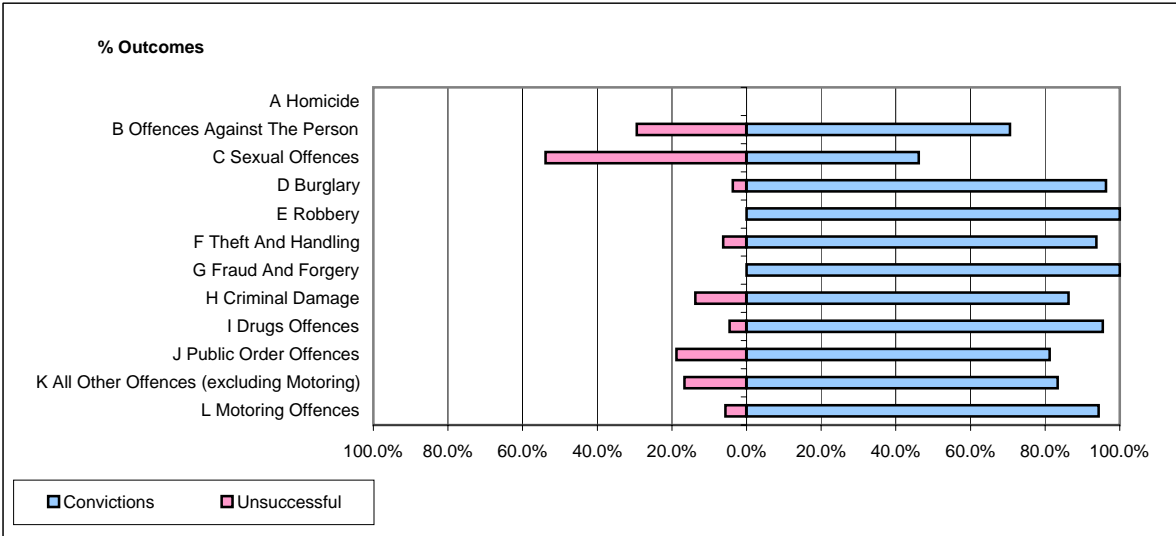


CPS OUTCOMES BY PRINCIPAL OFFENCE CATEGORY

January 2006

P04-Cheshire



	Convictions		Unsuccessful	
	Number of Defendants	%	Number of Defendants	%
A Homicide	0	#DIV/0!	0	#DIV/0!
B Offences Against The Person	163	70.6%	68	29.4%
C Sexual Offences	6	46.2%	7	53.8%
D Burglary	26	96.3%	1	3.7%
E Robbery	14	100.0%	0	0.0%
F Theft And Handling	179	93.7%	12	6.3%
G Fraud And Forgery	4	100.0%	0	0.0%
H Criminal Damage	88	86.3%	14	13.7%
I Drugs Offences	42	95.5%	2	4.5%
J Public Order Offences	82	81.2%	19	18.8%
K All Other Offences (excluding Motoring)	35	83.3%	7	16.7%
L Motoring Offences	804	94.4%	48	5.6%
Admin Finalisations	0	0.0%	17	100.0%
TOTAL	1,443	88.1%	195	11.9%