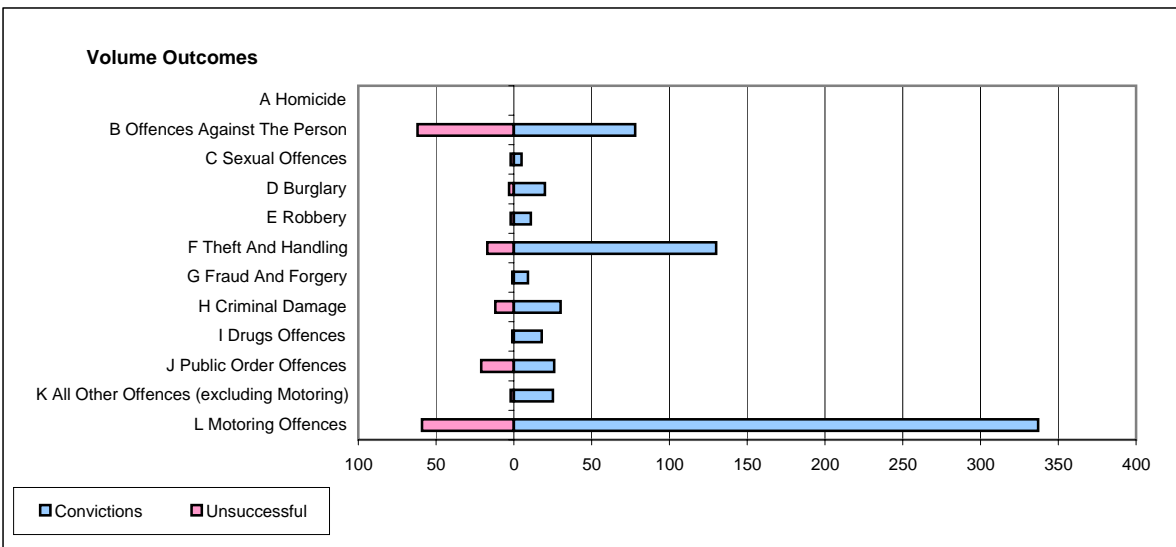
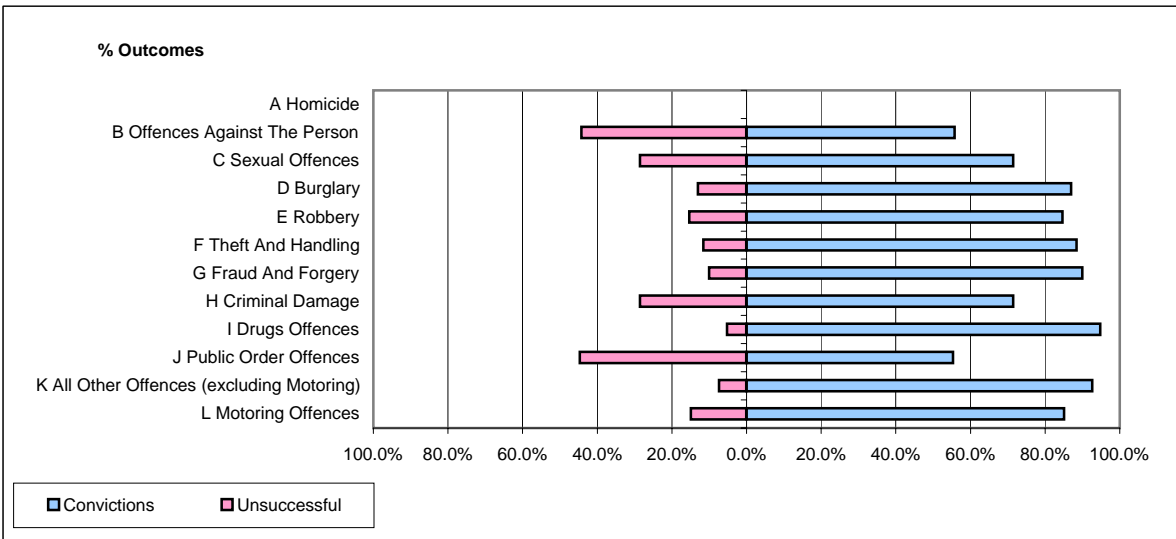


CPS OUTCOMES BY PRINCIPAL OFFENCE CATEGORY

January 2006

P02-Bedfordshire



	Convictions		Unsuccessful	
	Number of Defendants	%	Number of Defendants	%
A Homicide	0	#DIV/0!	0	#DIV/0!
B Offences Against The Person	78	55.7%	62	44.3%
C Sexual Offences	5	71.4%	2	28.6%
D Burglary	20	87.0%	3	13.0%
E Robbery	11	84.6%	2	15.4%
F Theft And Handling	130	88.4%	17	11.6%
G Fraud And Forgery	9	90.0%	1	10.0%
H Criminal Damage	30	71.4%	12	28.6%
I Drugs Offences	18	94.7%	1	5.3%
J Public Order Offences	26	55.3%	21	44.7%
K All Other Offences (excluding Motoring)	25	92.6%	2	7.4%
L Motoring Offences	337	85.1%	59	14.9%
Admin Finalisations	0	0.0%	19	100.0%
TOTAL	689	77.4%	201	22.6%